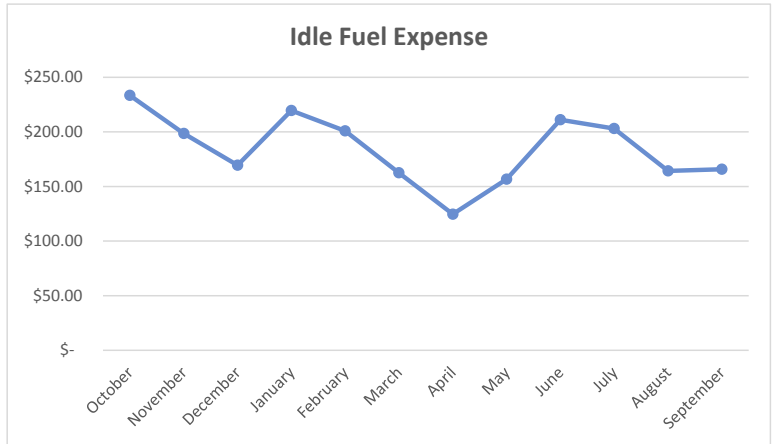
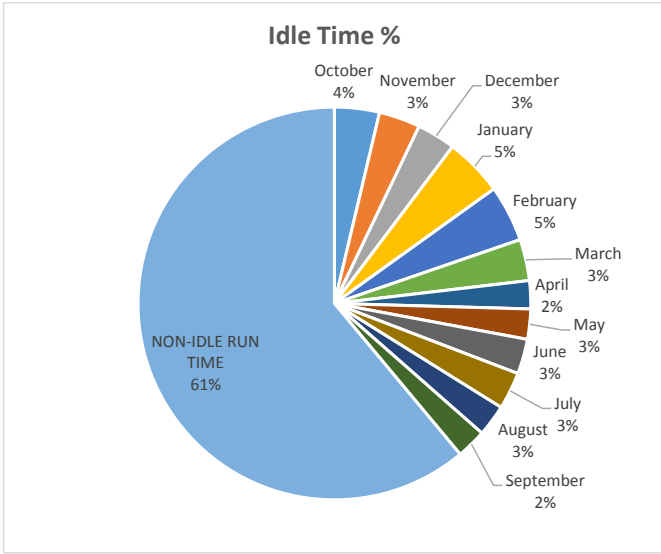
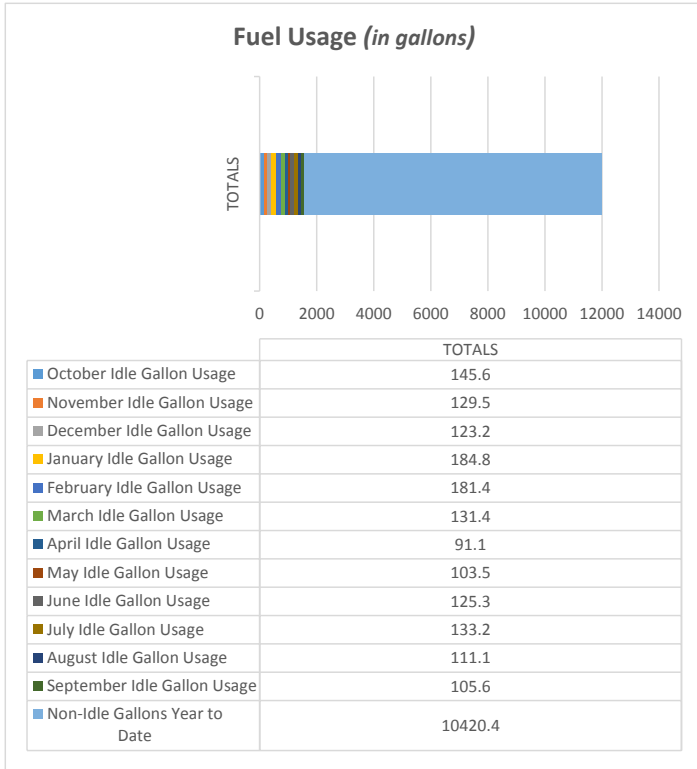
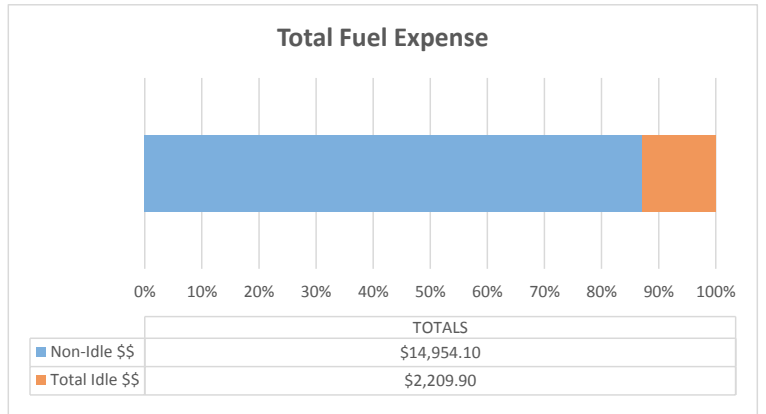


Backhoe Report

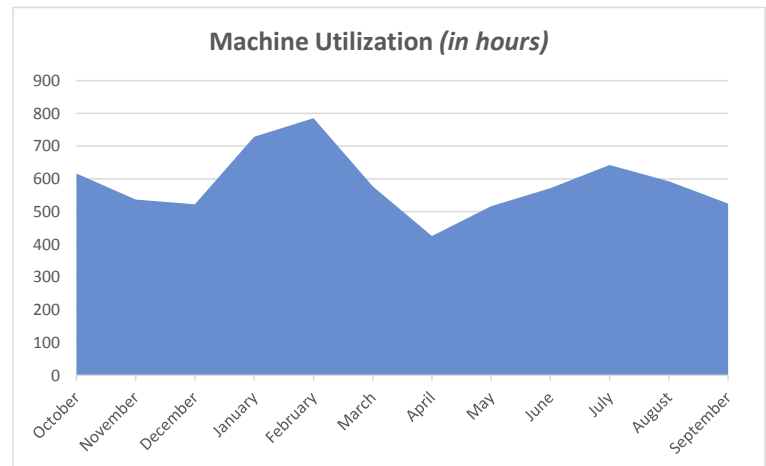
All Machines



Total Annual Idle Percentage 38.9%



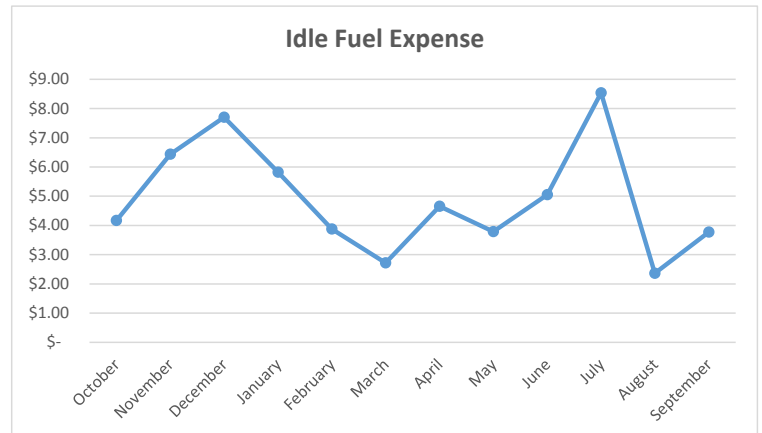
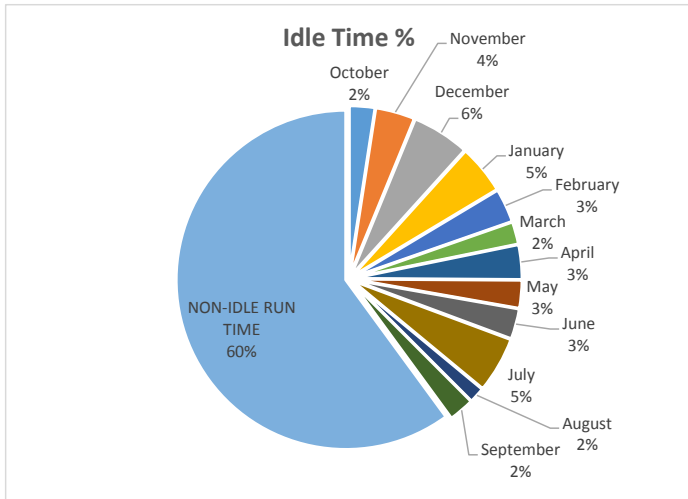
% of Fuel Expense Spent on Idle Time 12.88%



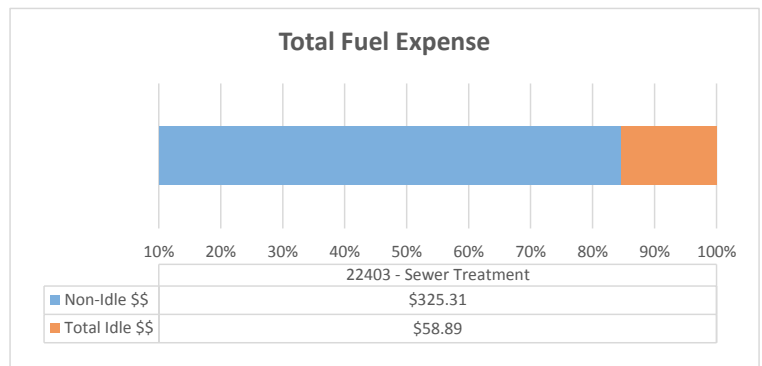
Average Machine Hours 851.1

Backhoe Report

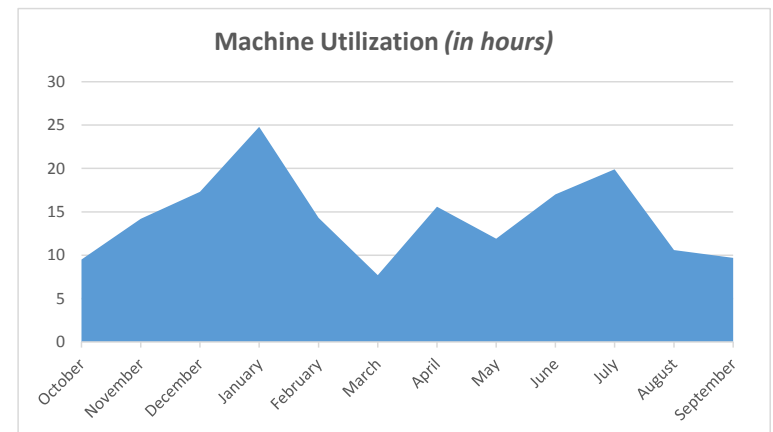
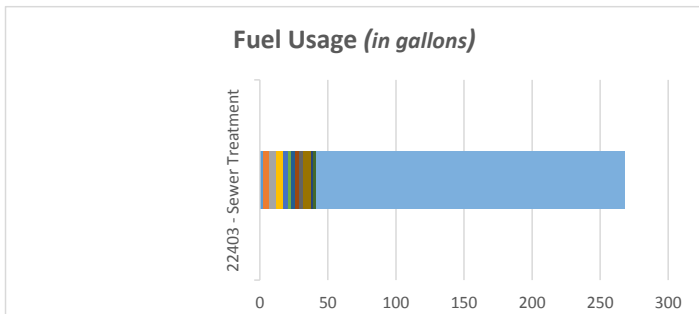
22403 - Sewer Treatment



Total Annual Idle Percentage 39.9%



% of Fuel Expense Spent on Idle Time 15.33%

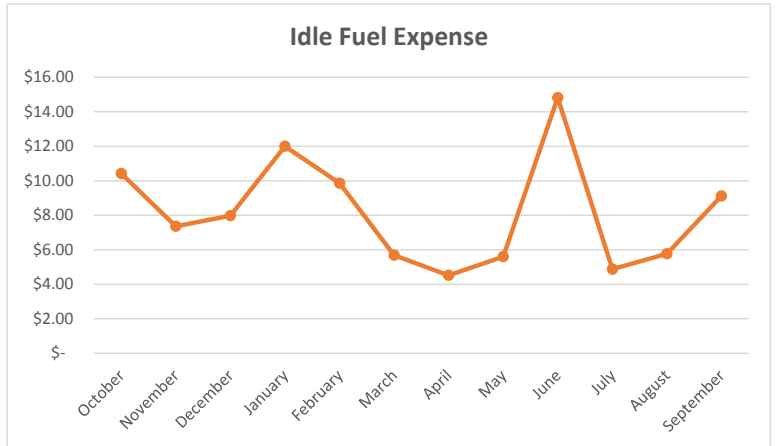
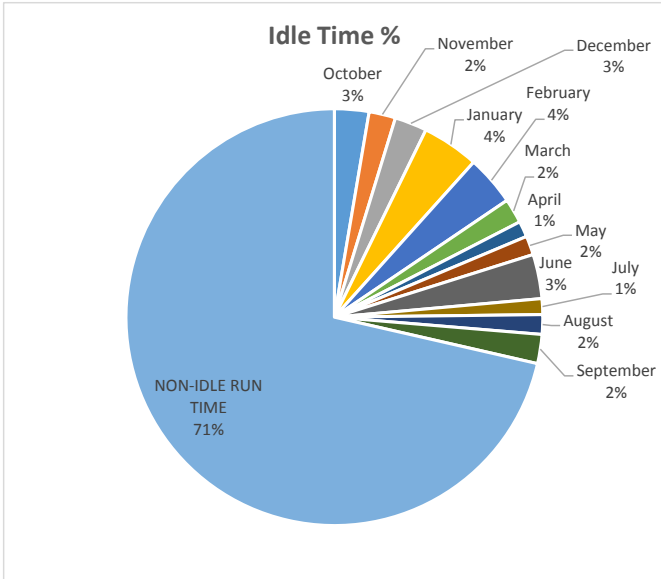


22403 - Sewer Treatment	
October Idle Gallon Usage	2.6
November Idle Gallon Usage	4.2
December Idle Gallon Usage	5.6
January Idle Gallon Usage	4.9
February Idle Gallon Usage	3.5
March Idle Gallon Usage	2.2
April Idle Gallon Usage	3.4
May Idle Gallon Usage	2.5
June Idle Gallon Usage	3
July Idle Gallon Usage	5.6
August Idle Gallon Usage	1.6
September Idle Gallon Usage	2.4
Non-Idle Gallons Year to Date	226.8

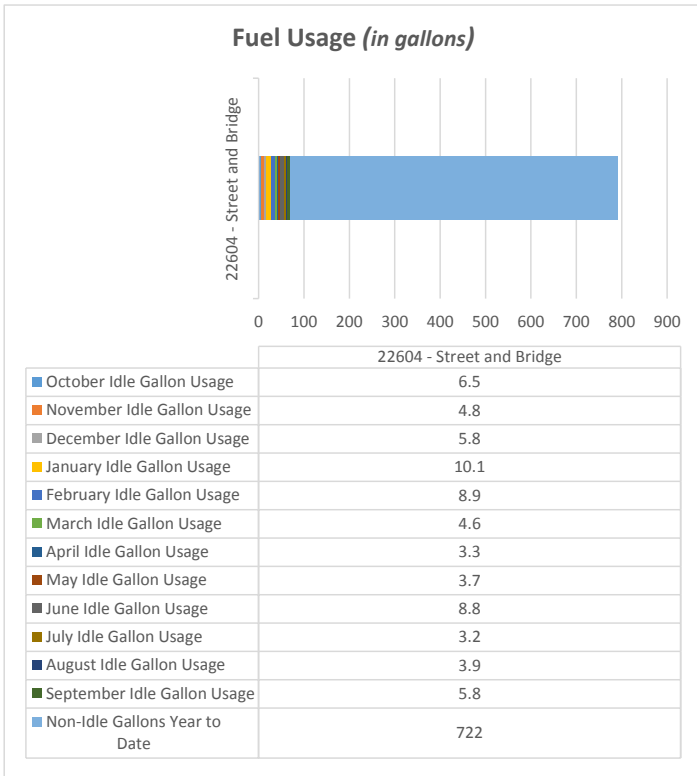
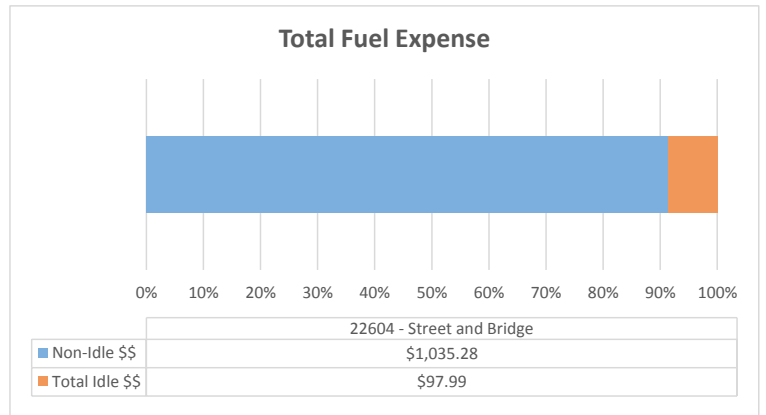
TOTAL MACHINE HOURS 611.7

Backhoe Report

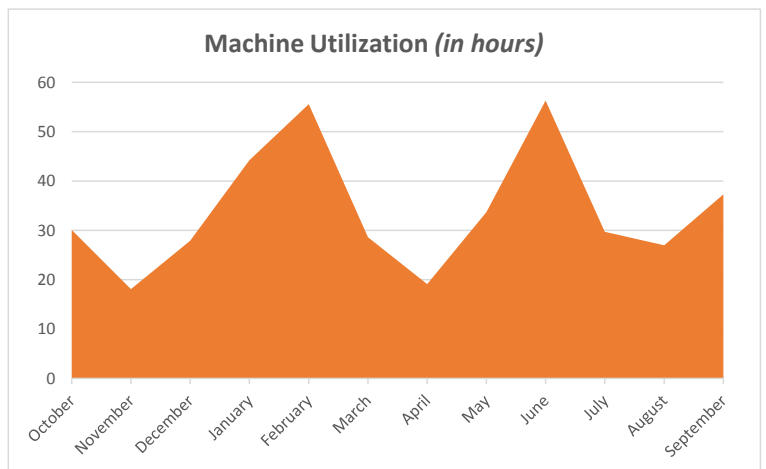
22604 - Street and Bridge



Total Annual Idle Percentage 28.6%



% of Fuel Expense Spent on Idle Time 8.65%

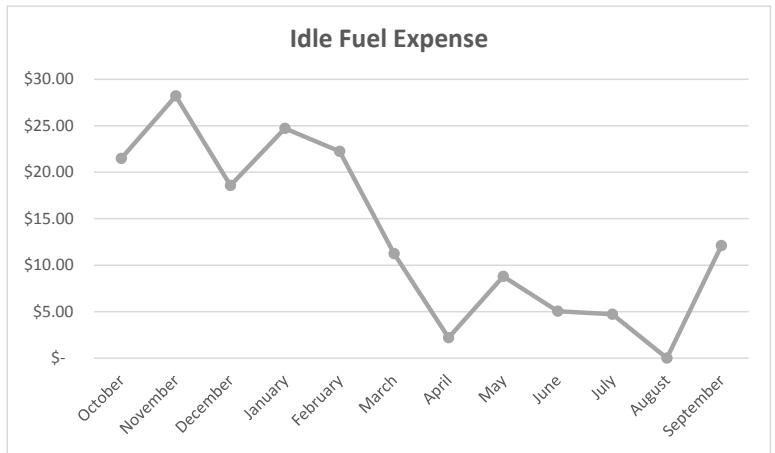
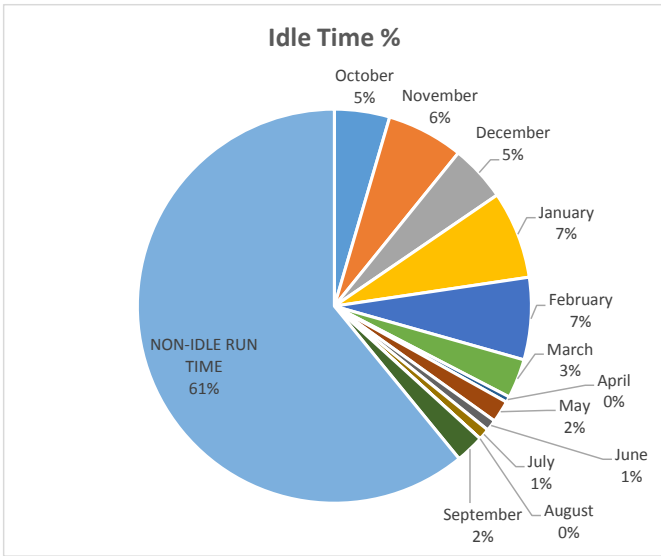


TOTAL MACHINE HOURS 792.5

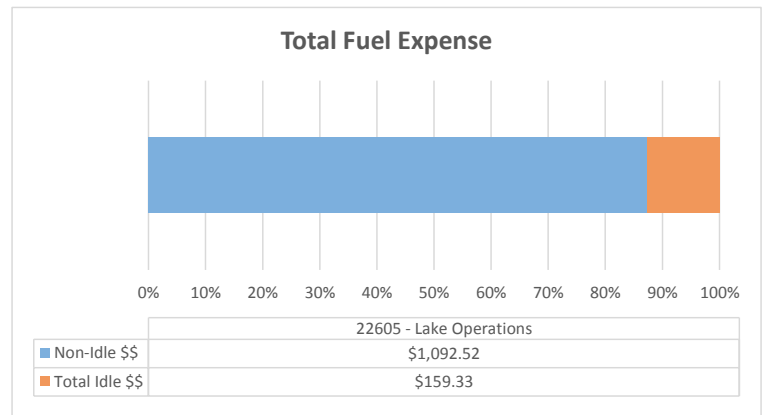
Machine Utilization: Below Average

Backhoe Report

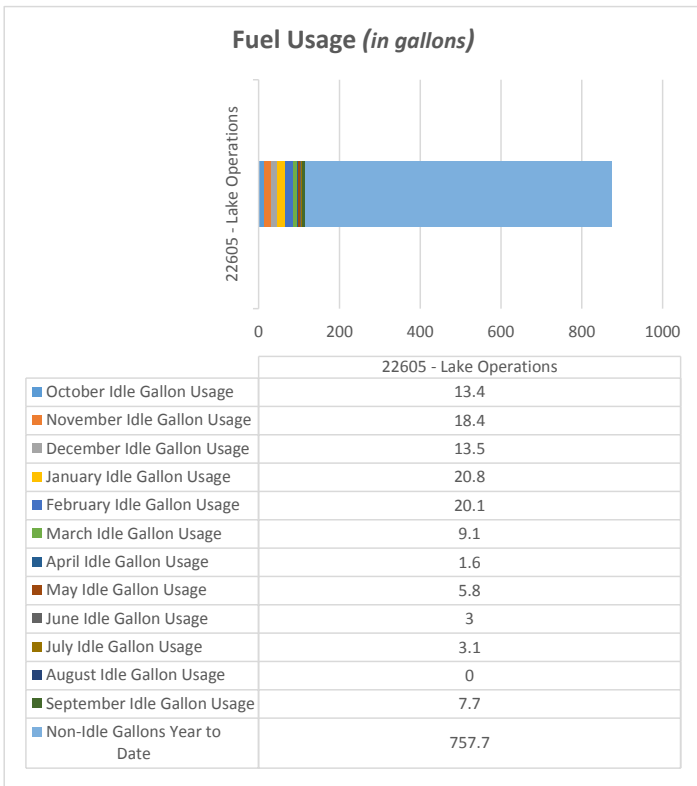
22605 - Lake Operations



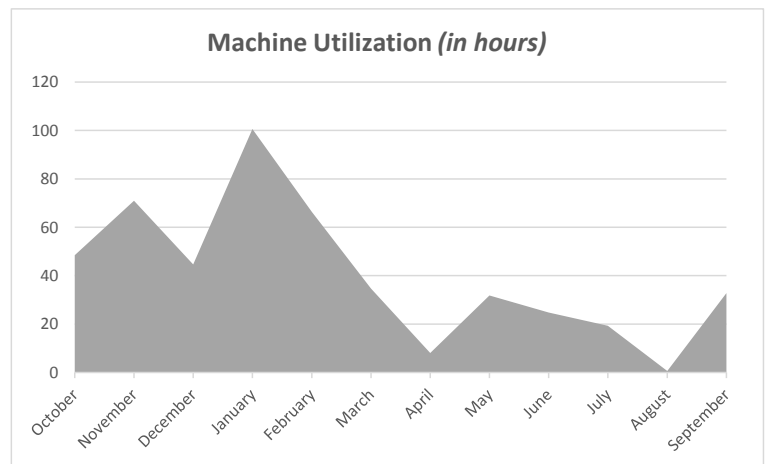
Total Annual Idle Percentage 39.1%



% of Fuel Expense Spent on Idle Time 12.73%



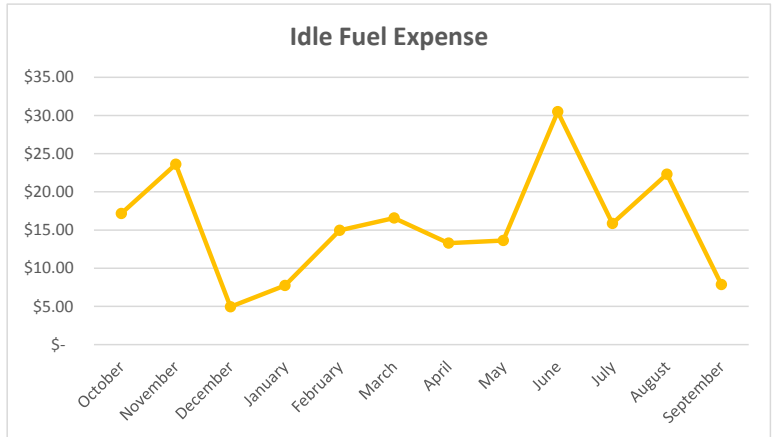
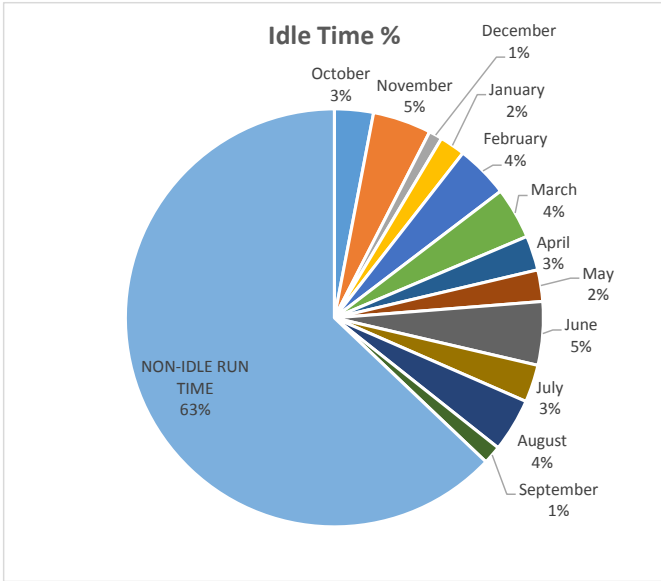
TOTAL MACHINE HOURS 807.8



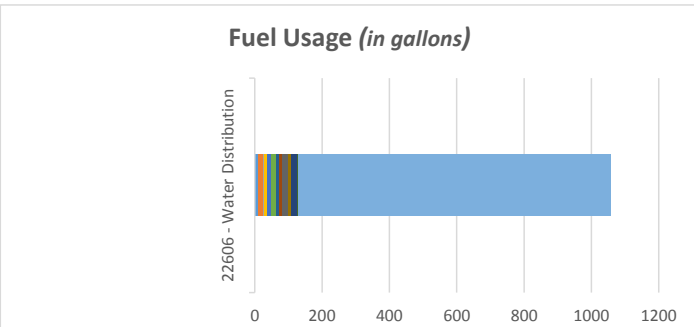
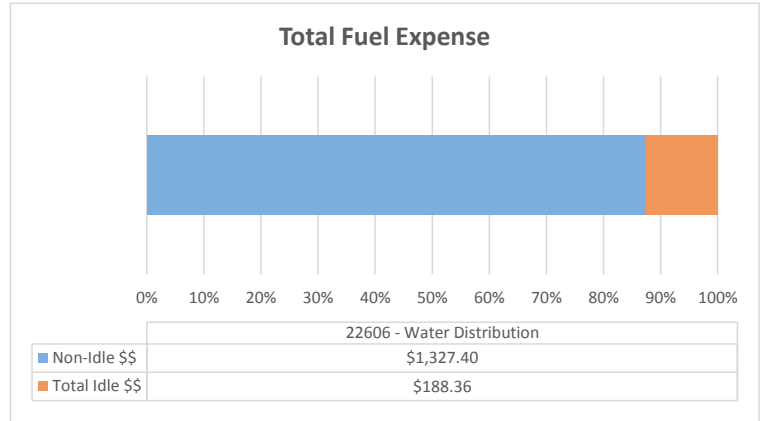
Machine Utilization: Below Average

Backhoe Report

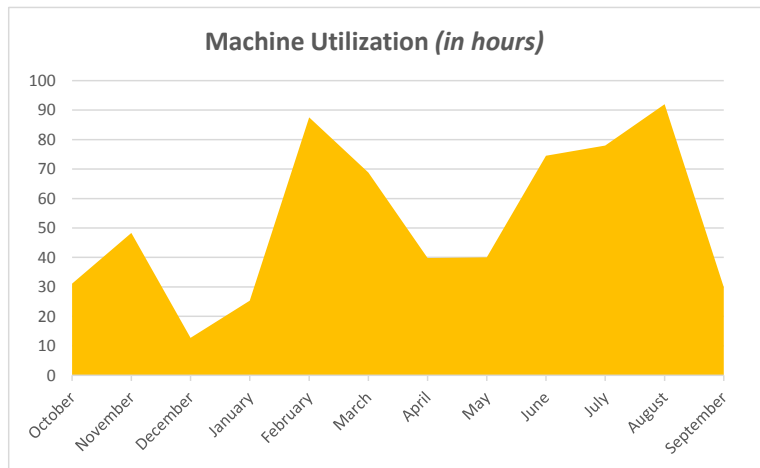
22606 - Water Distribution



Total Annual Idle Percentage 37.1%



% of Fuel Expense Spent on Idle Time 12.43%

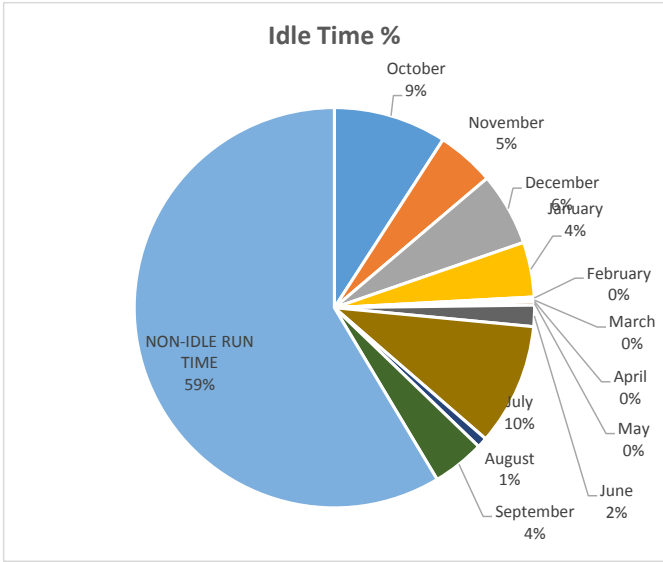


TOTAL MACHINE HOURS 787.3

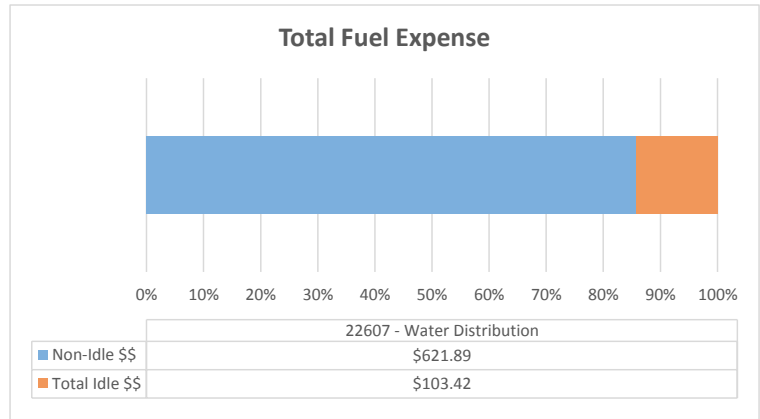
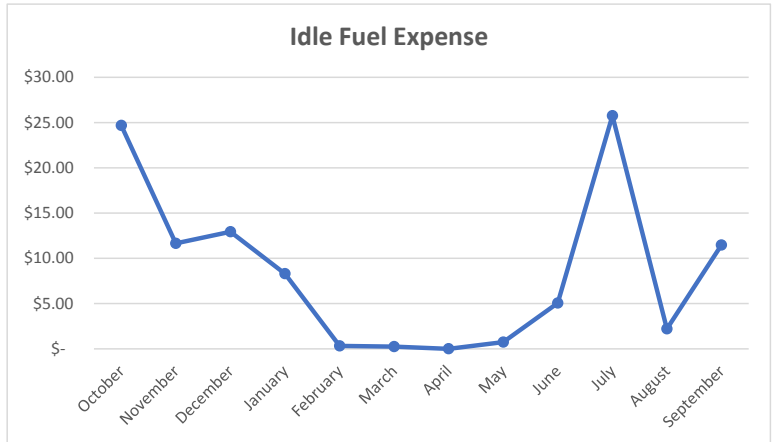
Machine Utilization: Below Average

Backhoe Report

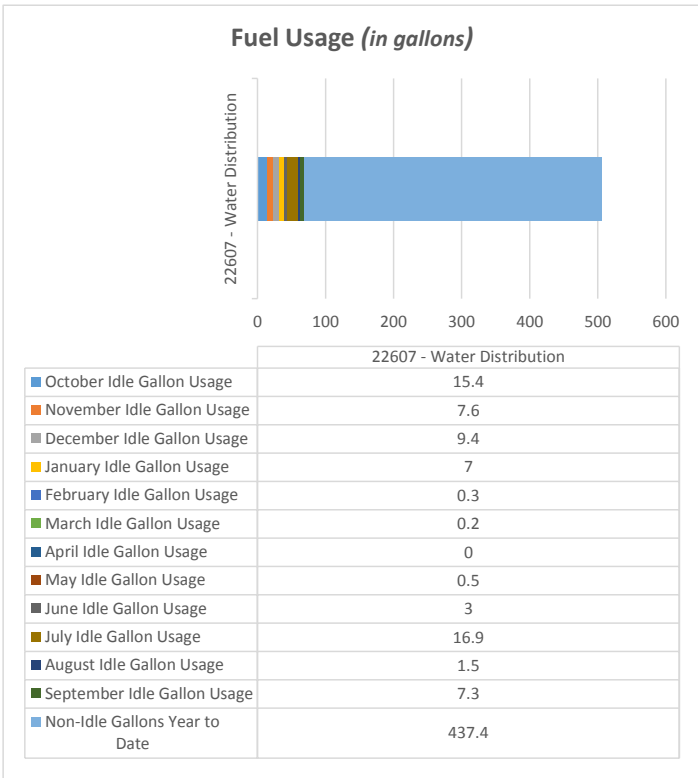
22607 - Water Distribution



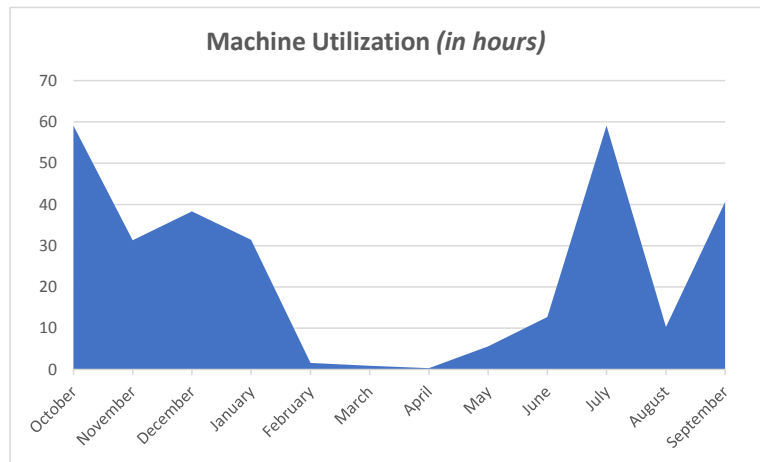
Total Annual Idle Percentage 41.4%



% of Fuel Expense Spent on Idle Time **14.26%**



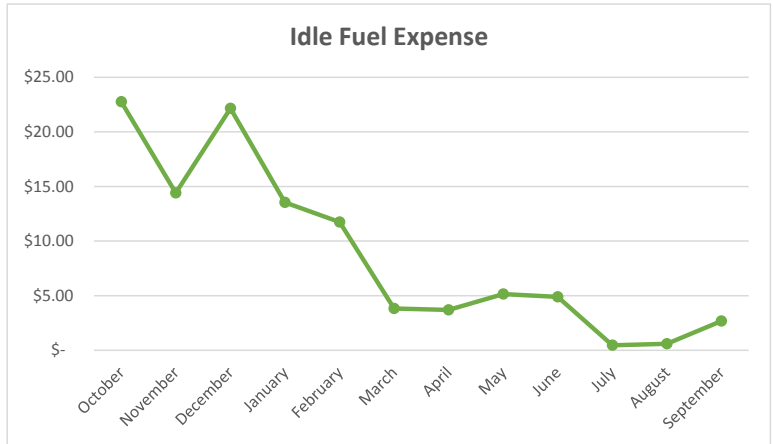
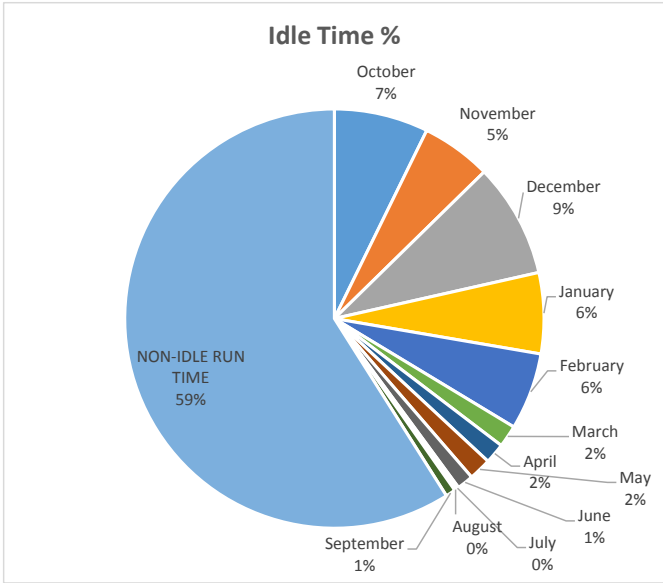
TOTAL MACHINE HOURS 677.5



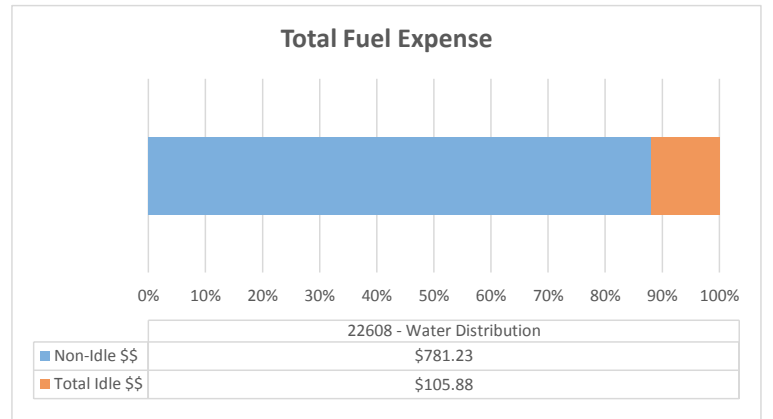
Machine Utilization: Below Average

Backhoe Report

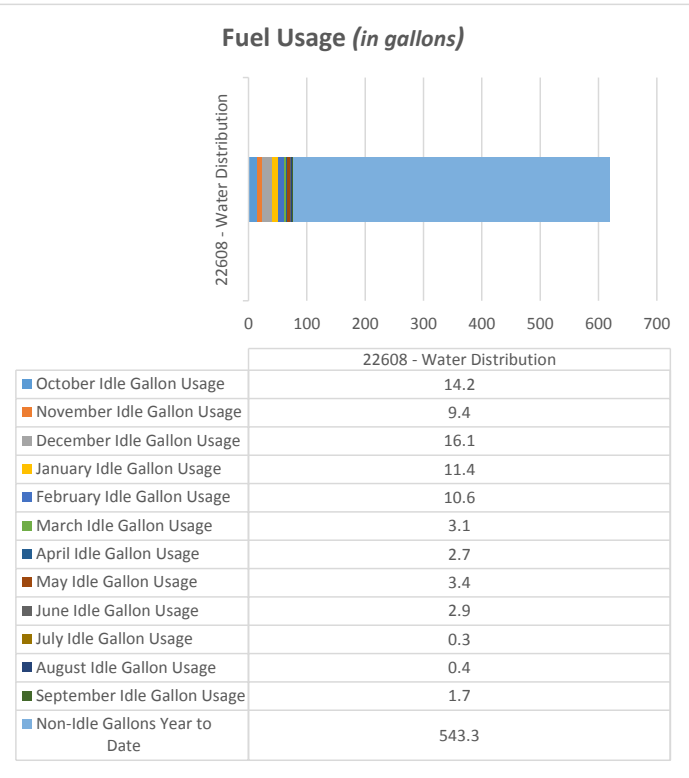
22608 - Water Distribution



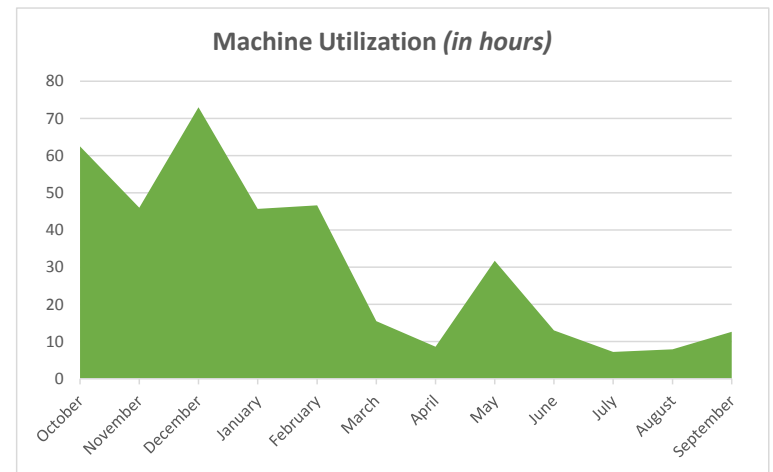
Total Annual Idle Percentage 41.0%



% of Fuel Expense Spent on Idle Time **11.94%**



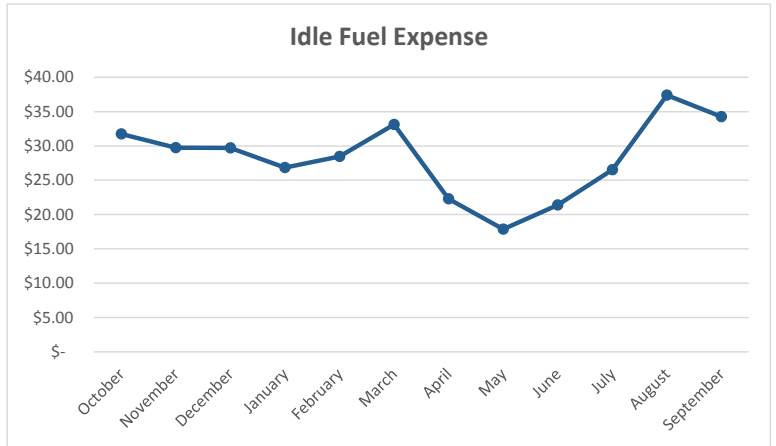
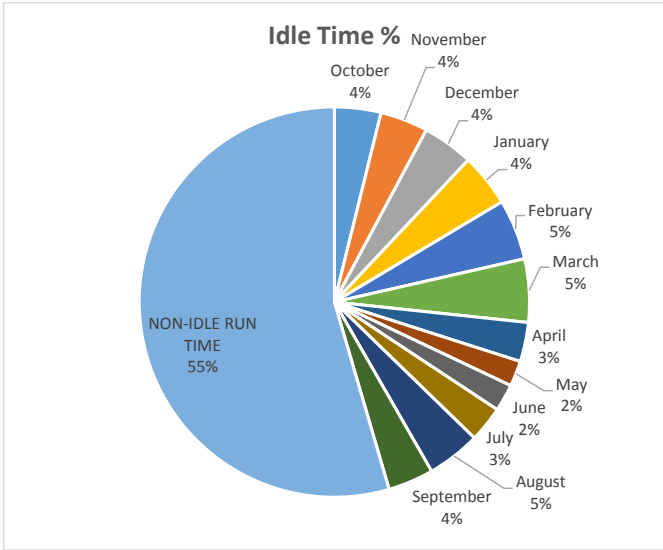
TOTAL MACHINE HOURS 971.1



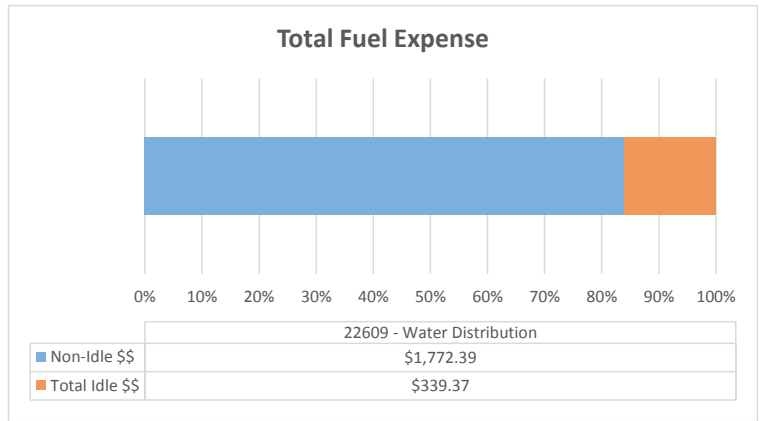
Machine Utilization: Above Average

Backhoe Report

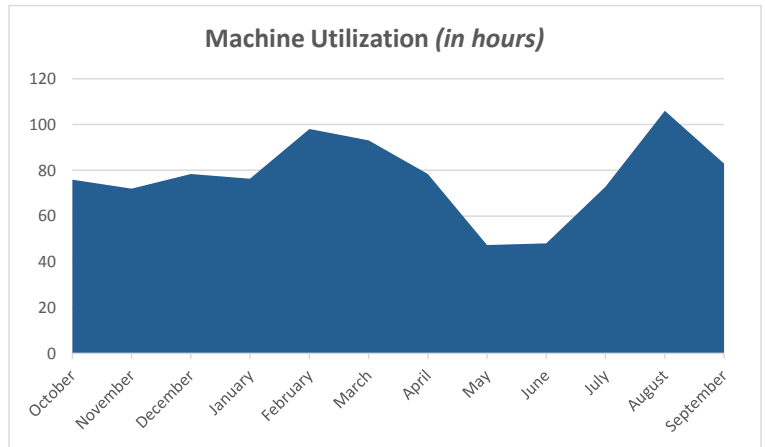
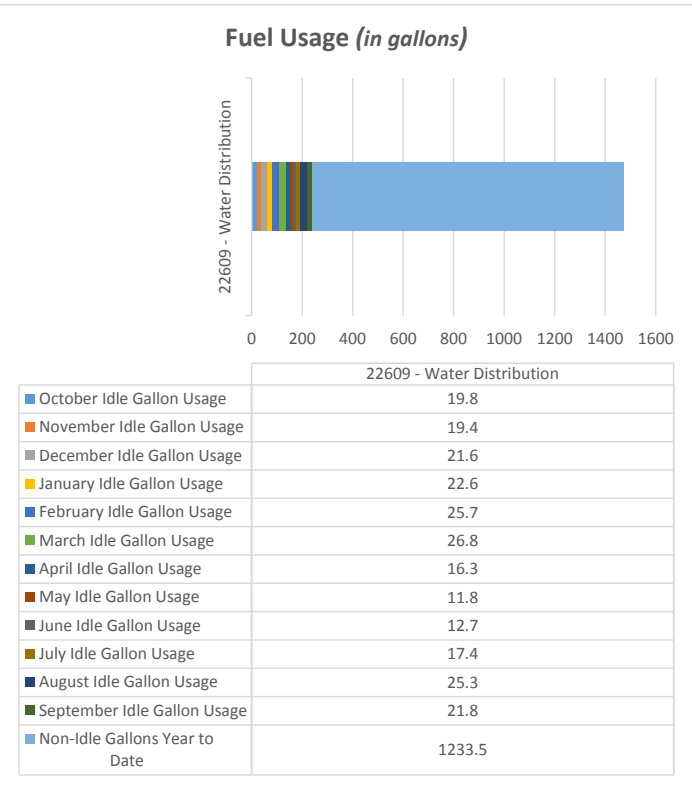
22609 - Water Distribution



Total Annual Idle Percentage 45.5%



% of Fuel Expense Spent on Idle Time 16.07%

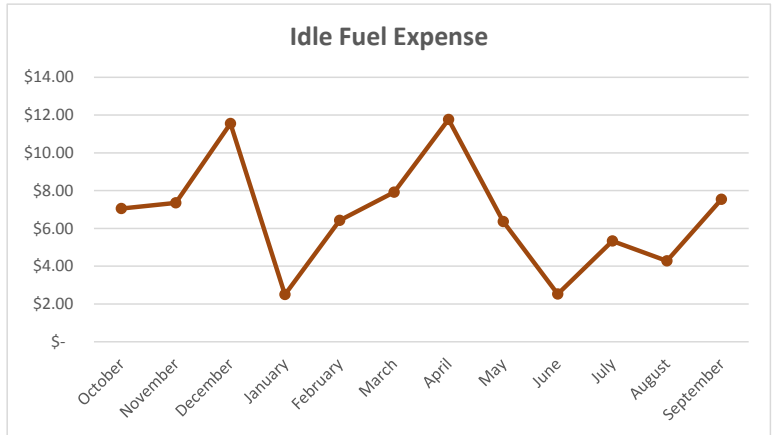
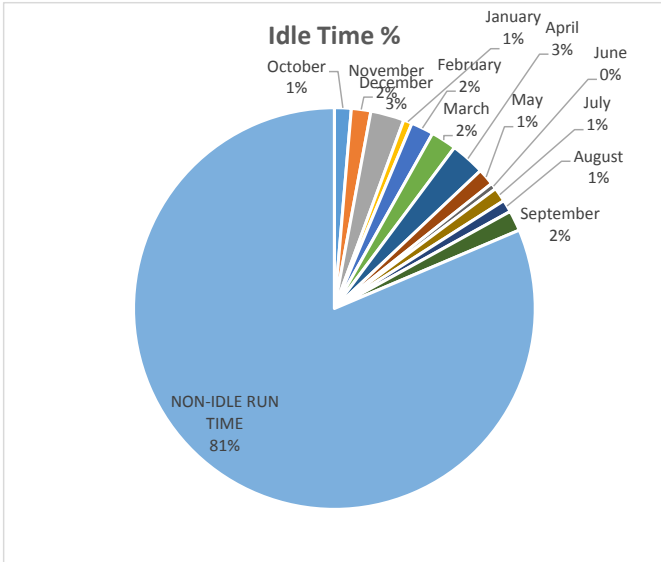


TOTAL MACHINE HOURS 1618

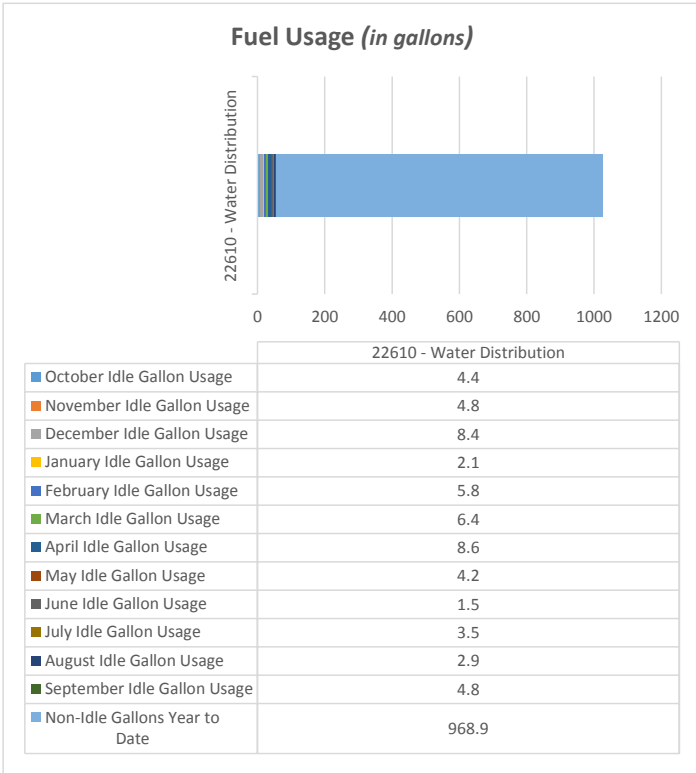
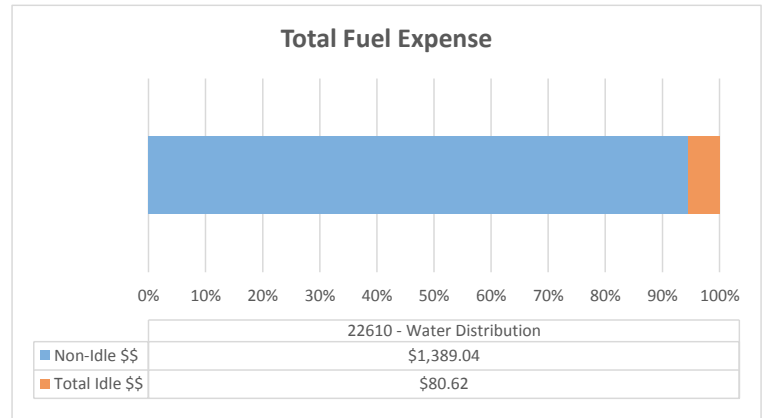
Machine Utilization: Above Average

Backhoe Report

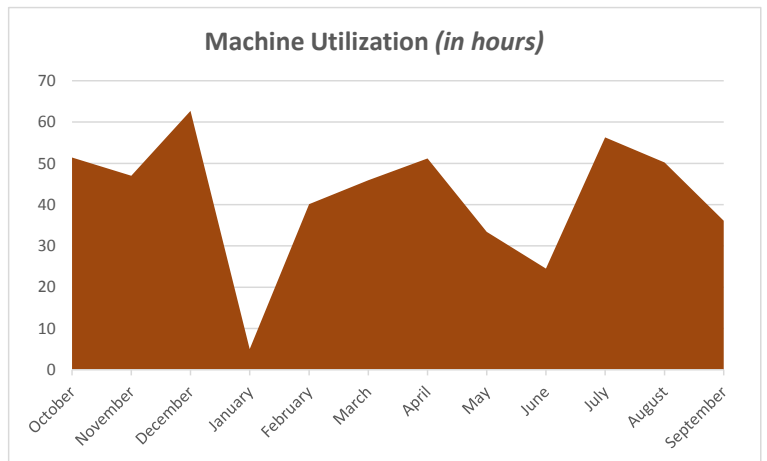
22610 - Water Distribution



Total Annual Idle Percentage 18.6%



% of Fuel Expense Spent on Idle Time 5.49%

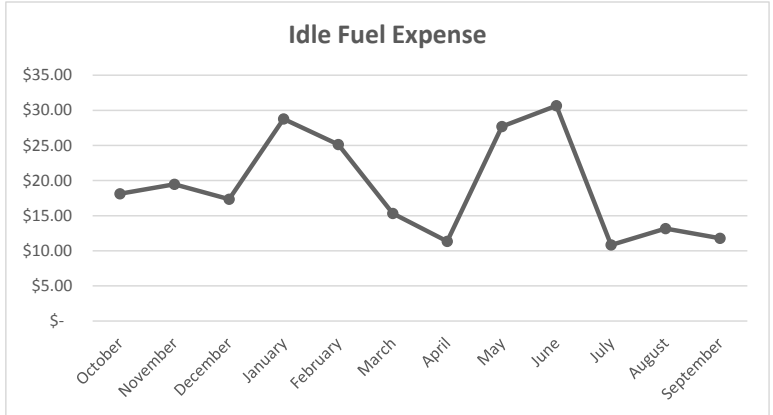
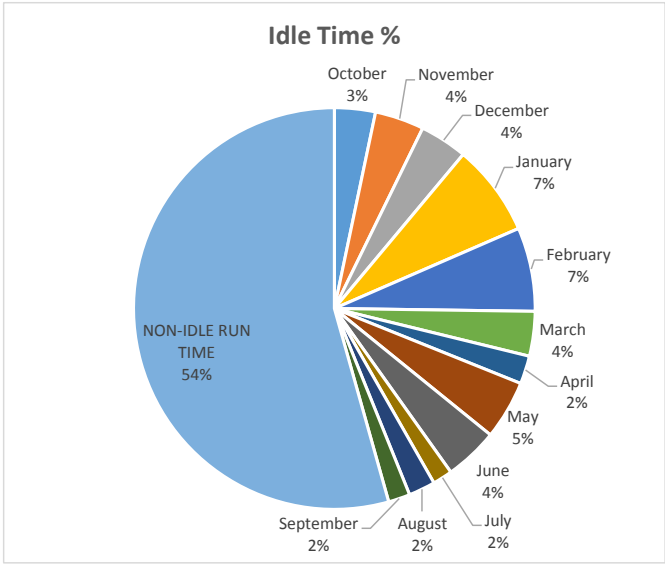


TOTAL MACHINE HOURS 1042

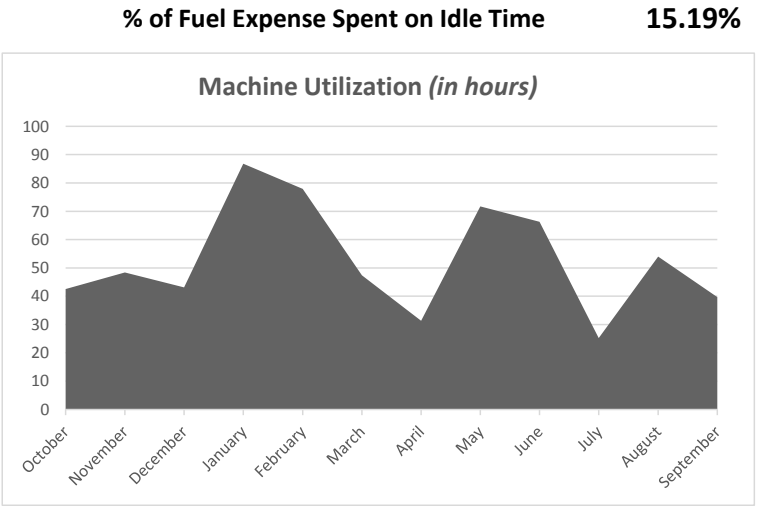
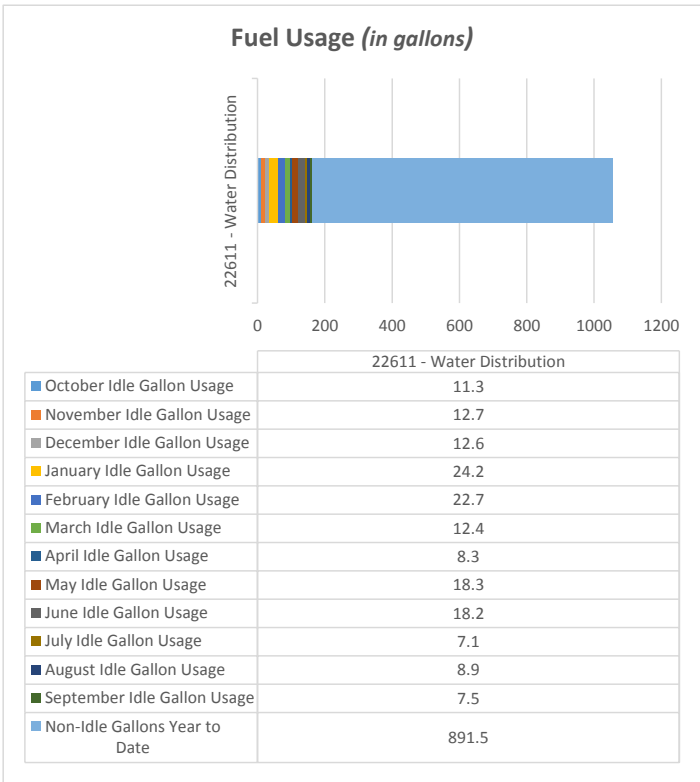
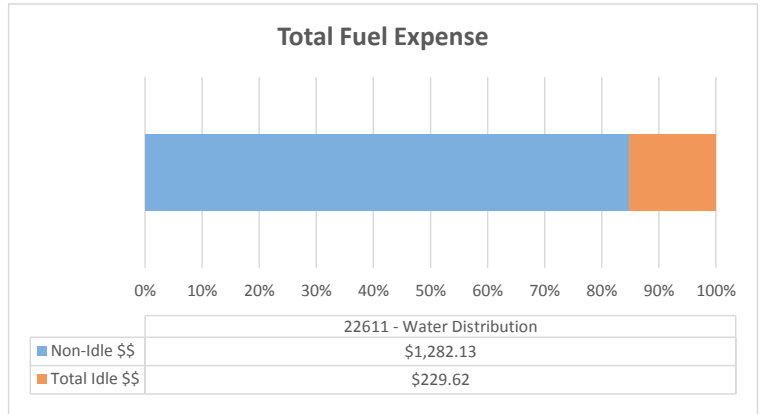
Machine Utilization: Above Average

Backhoe Report

22611 - Water Distribution



Total Annual Idle Percentage 45.6%



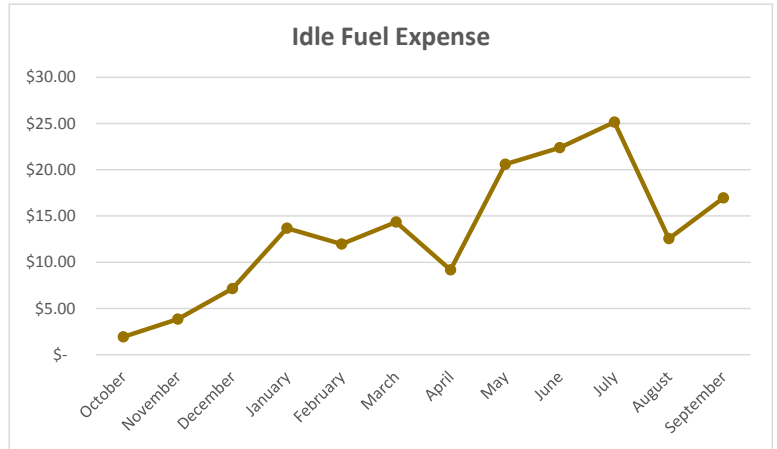
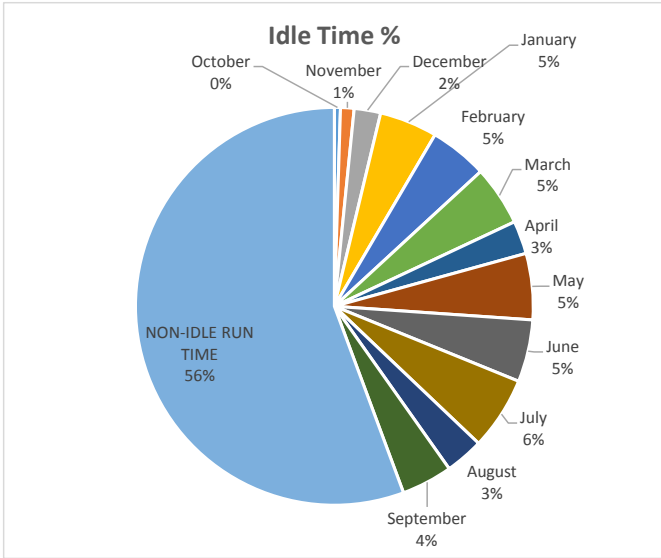
% of Fuel Expense Spent on Idle Time 15.19%

TOTAL MACHINE HOURS 1015

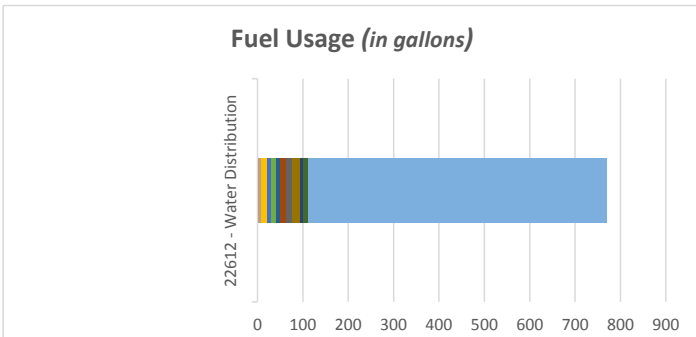
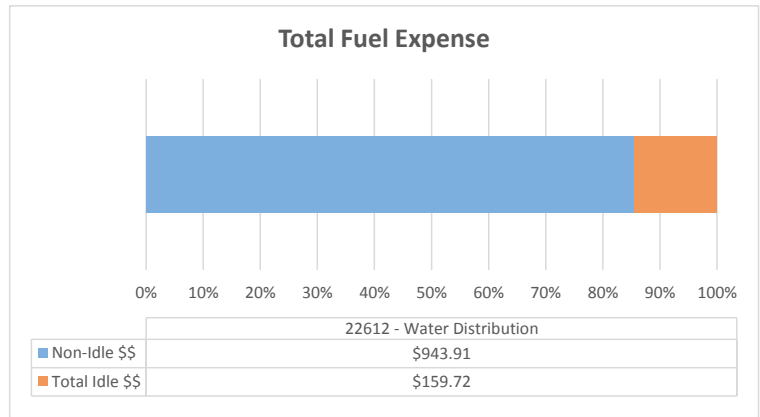
Machine Utilization: Above Average

Backhoe Report

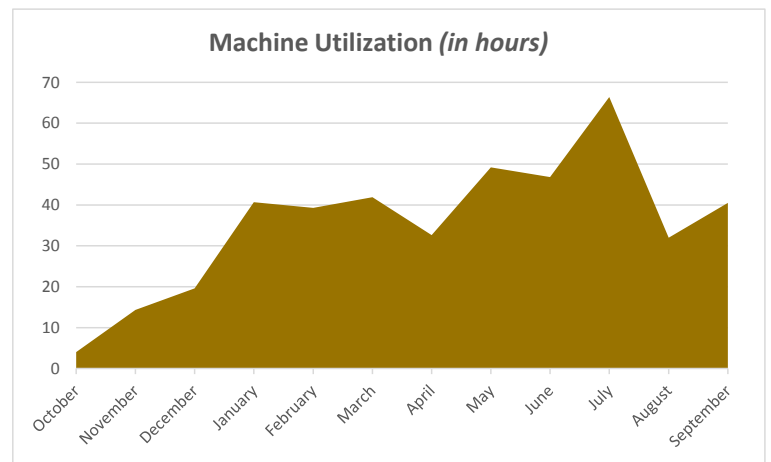
22612 - Water Distribution



Total Annual Idle Percentage 44.3%



% of Fuel Expense Spent on Idle Time 14.47%

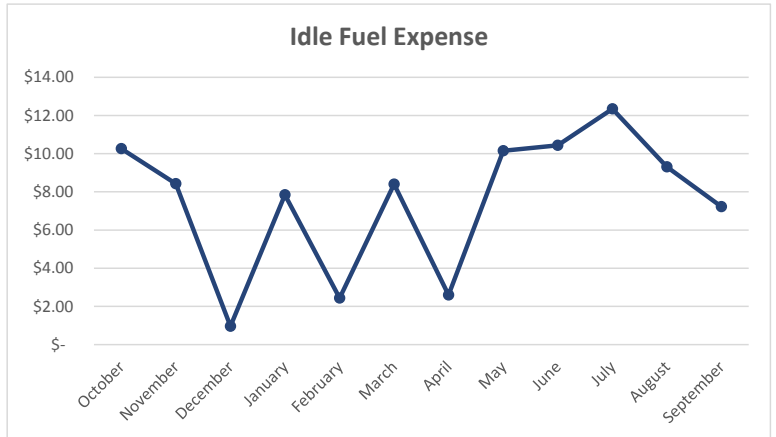
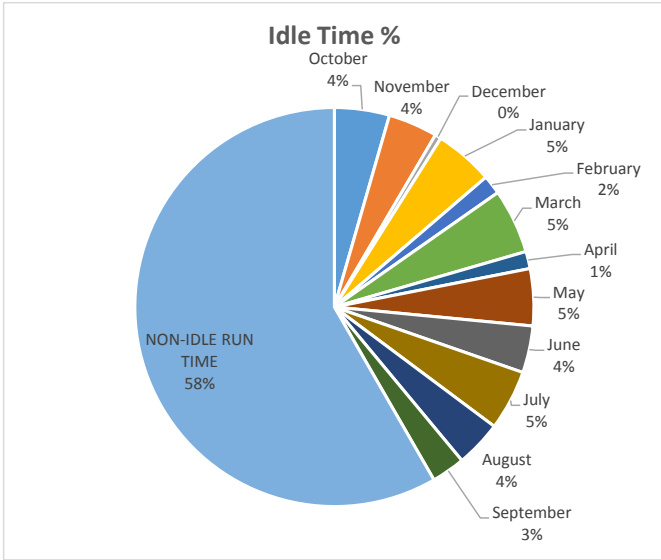


TOTAL MACHINE HOURS 810

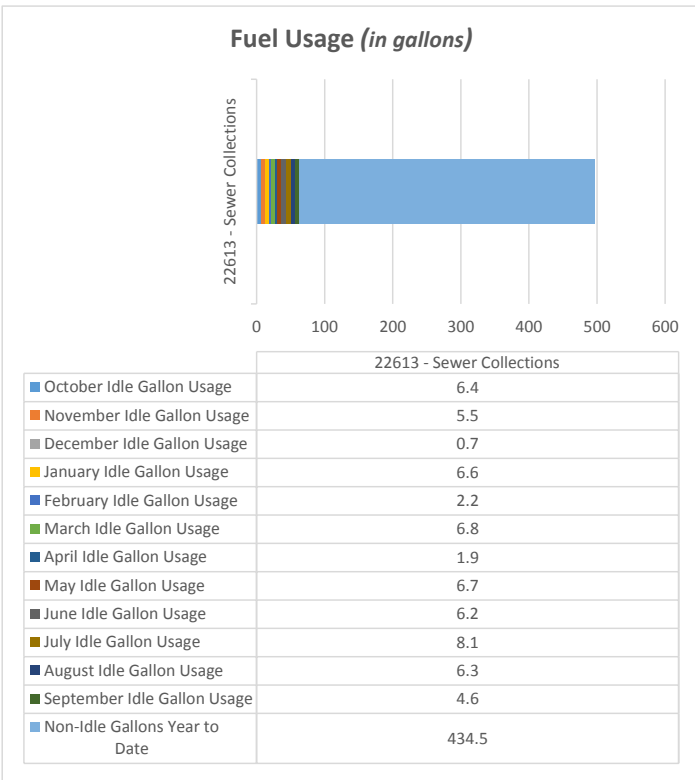
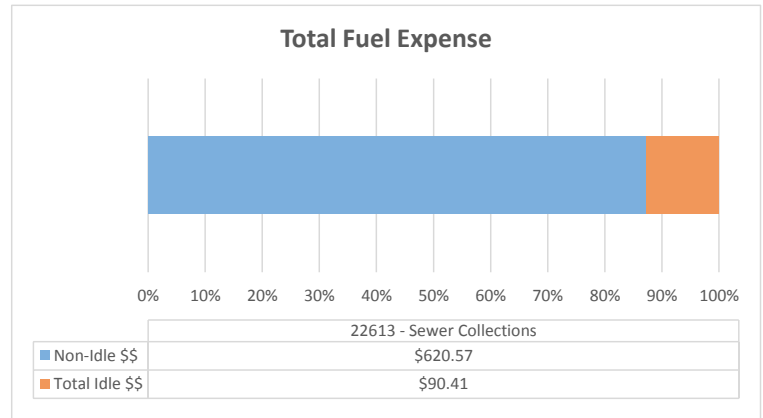
Machine Utilization: Below Average

Backhoe Report

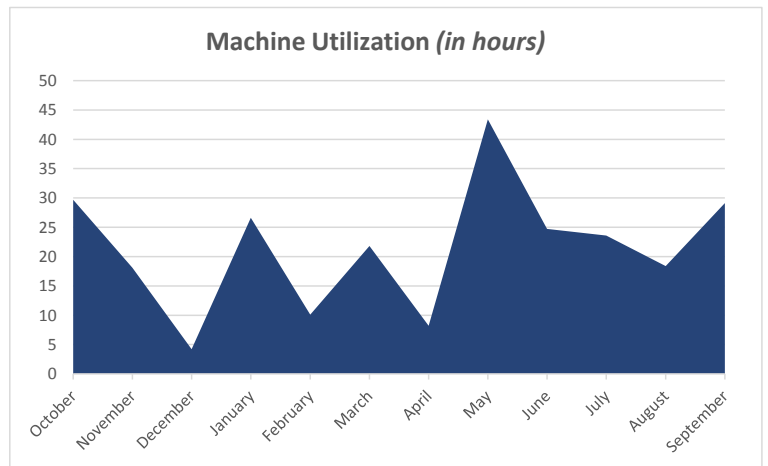
22613 - Sewer Collections



Total Annual Idle Percentage 41.7%



% of Fuel Expense Spent on Idle Time 12.72%

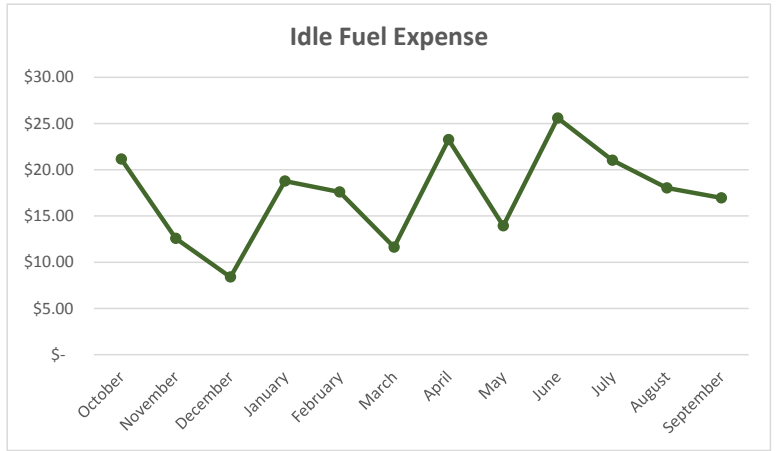
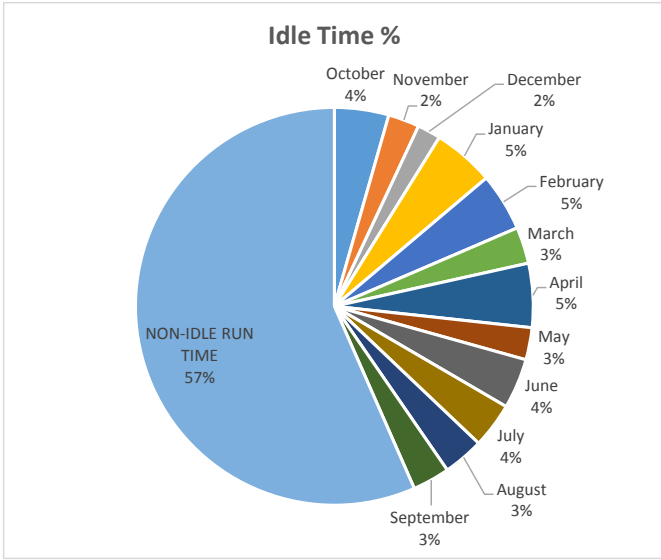


TOTAL MACHINE HOURS 469.2

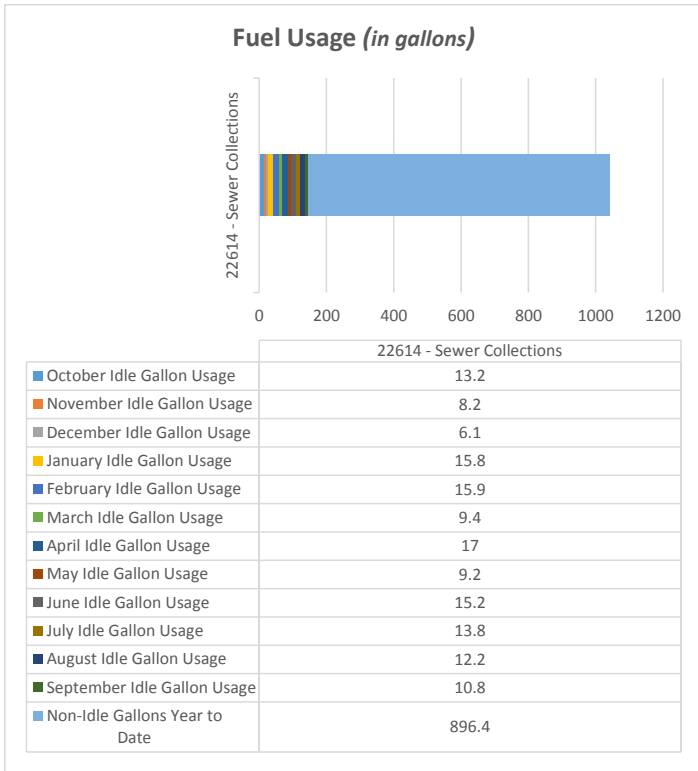
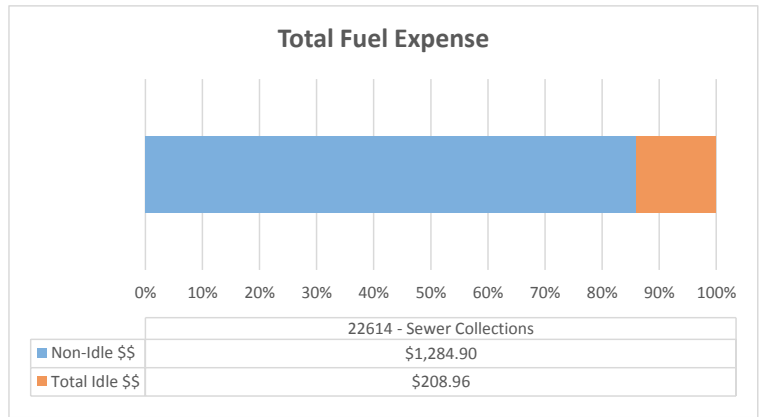
Machine Utilization: Below Average

Backhoe Report

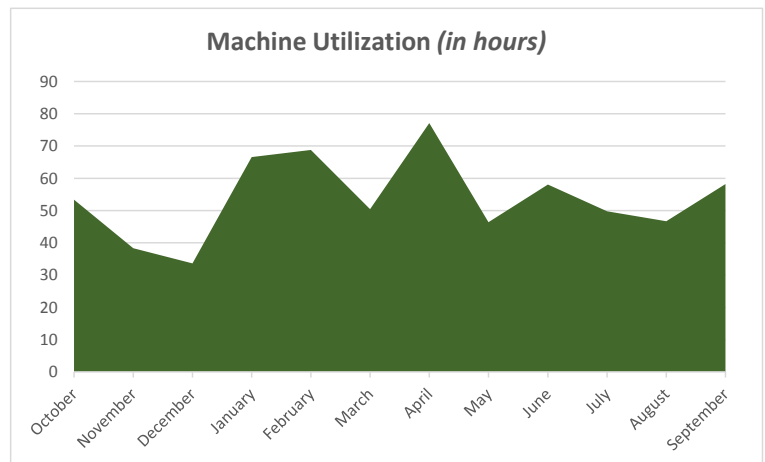
22614 - Sewer Collections



Total Annual Idle Percentage 43.4%



% of Fuel Expense Spent on Idle Time 13.99%

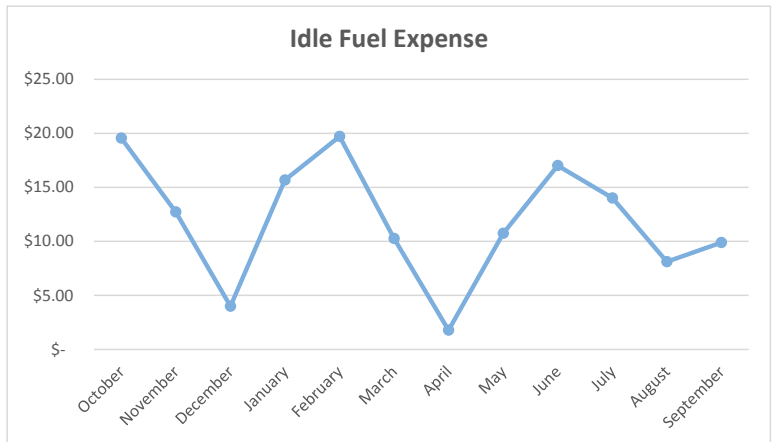
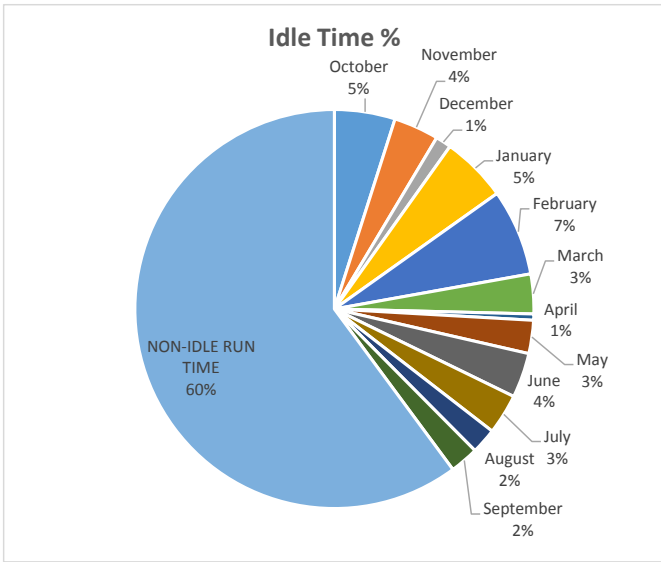


TOTAL MACHINE HOURS 1223

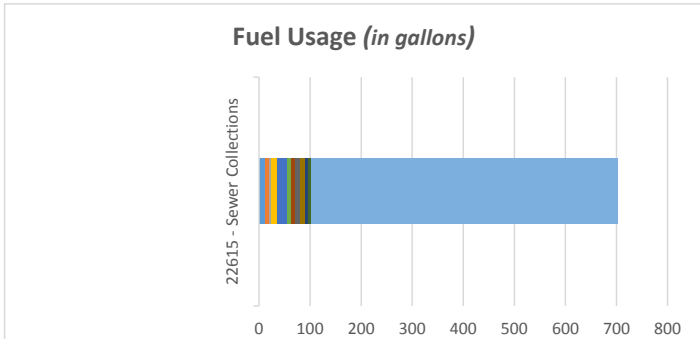
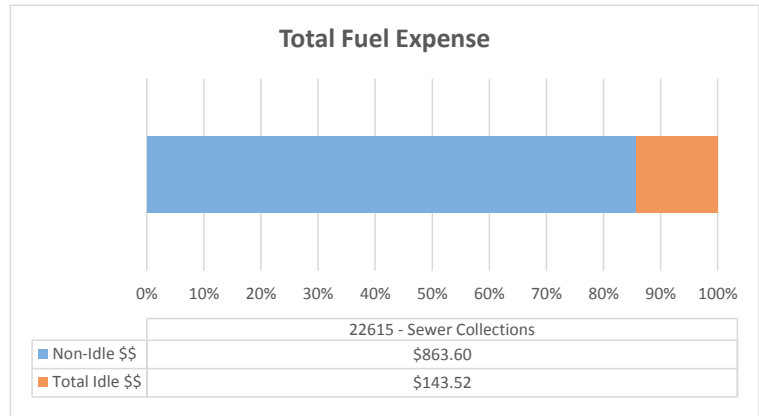
Machine Utilization: Above Average

Backhoe Report

22615 - Sewer Collections

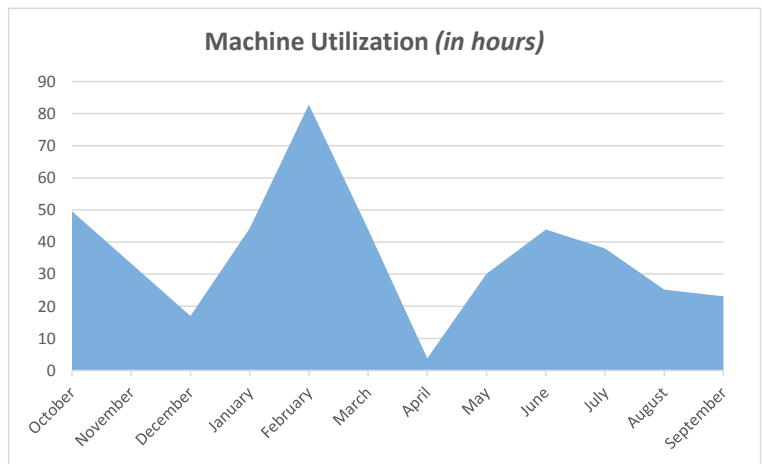


Total Annual Idle Percentage 39.9%



22615 - Sewer Collections	
October Idle Gallon Usage	12.2
November Idle Gallon Usage	8.3
December Idle Gallon Usage	2.9
January Idle Gallon Usage	13.2
February Idle Gallon Usage	17.8
March Idle Gallon Usage	8.3
April Idle Gallon Usage	1.3
May Idle Gallon Usage	7.1
June Idle Gallon Usage	10.1
July Idle Gallon Usage	9.2
August Idle Gallon Usage	5.5
September Idle Gallon Usage	6.3
Non-Idle Gallons Year to Date	601.1

% of Fuel Expense Spent on Idle Time 14.25%

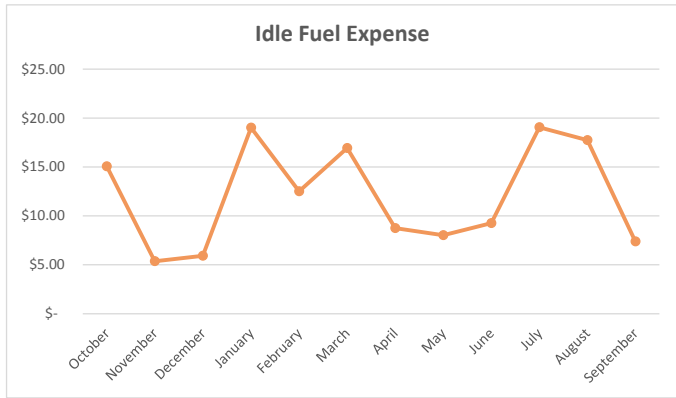
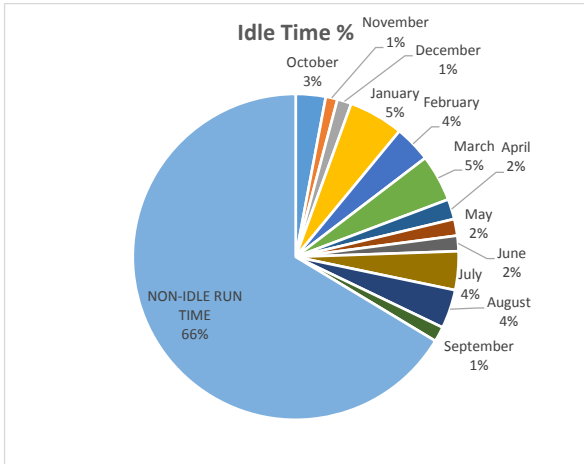


TOTAL MACHINE HOURS 562.5

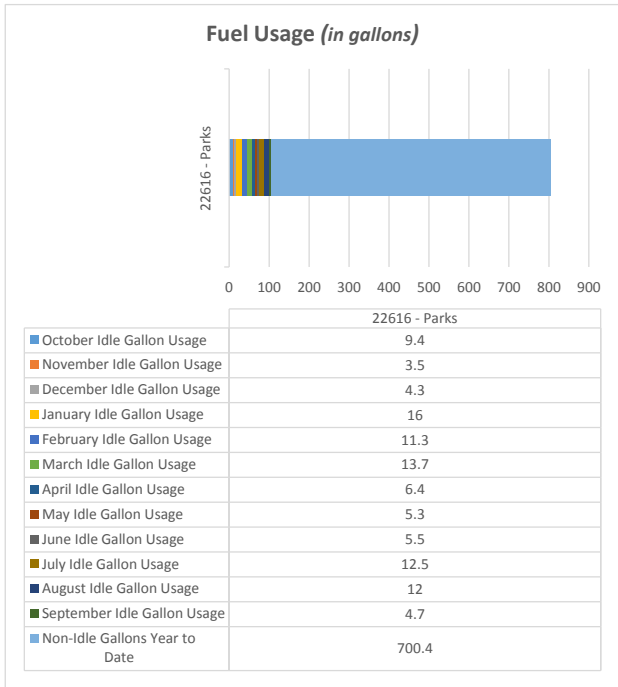
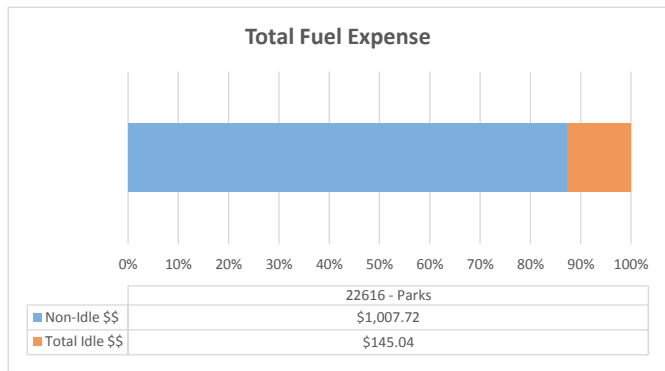
Machine Utilization: Below Average

Backhoe Report

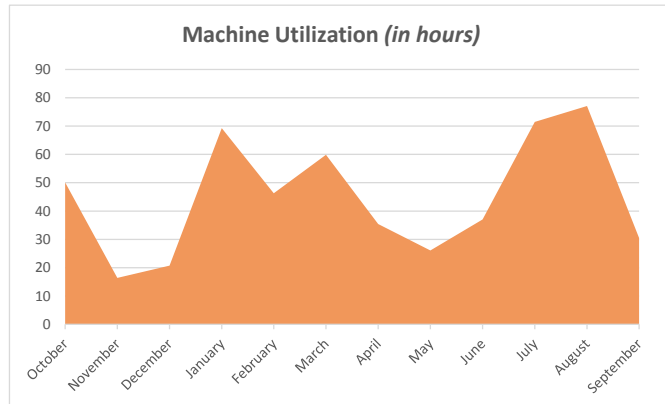
22616 - Parks



Total Annual Idle Percentage 33.6%



% of Fuel Expense Spent on Idle Time 12.58%

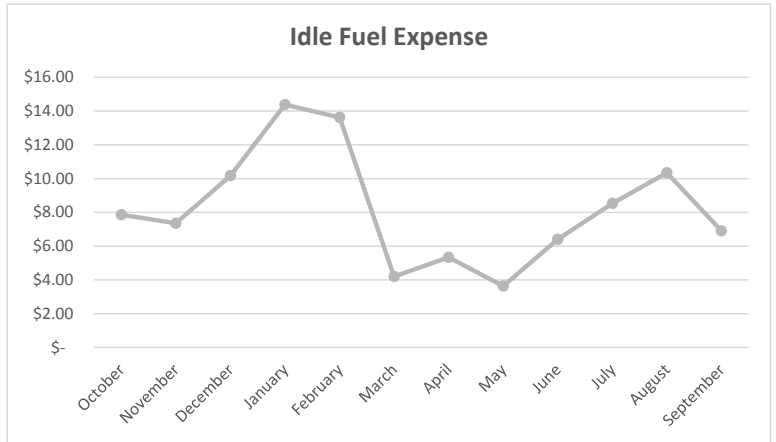
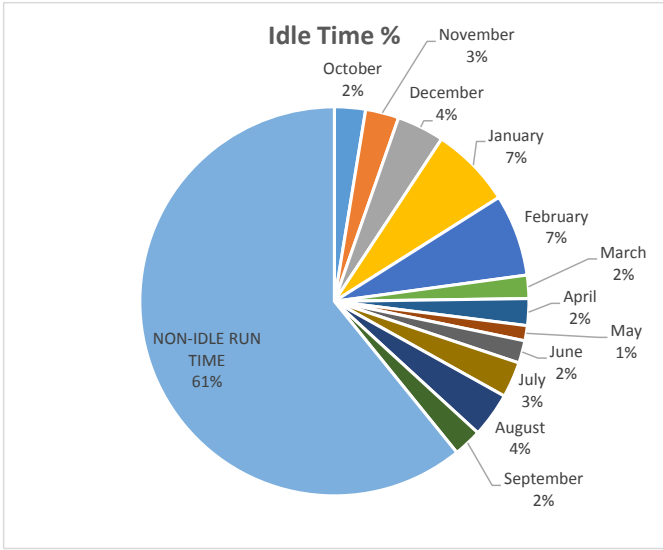


TOTAL MACHINE HOURS 798.3

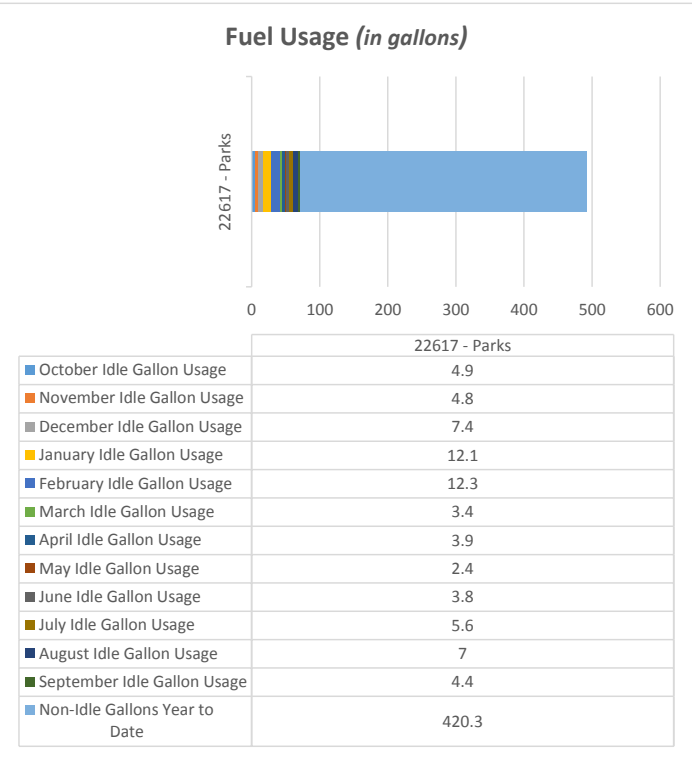
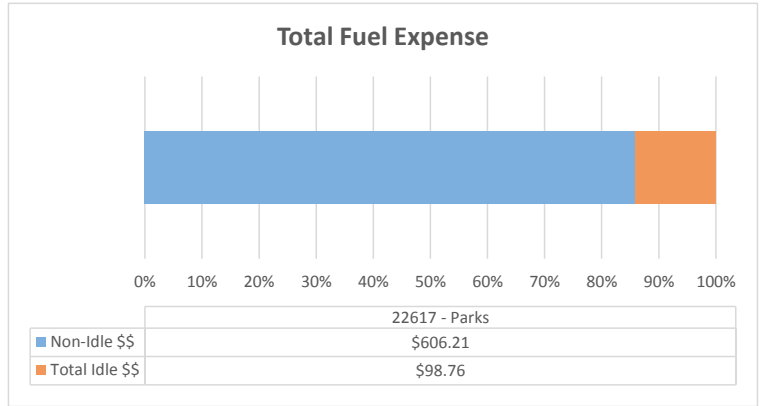
Machine Utilization: Below Average

Backhoe Report

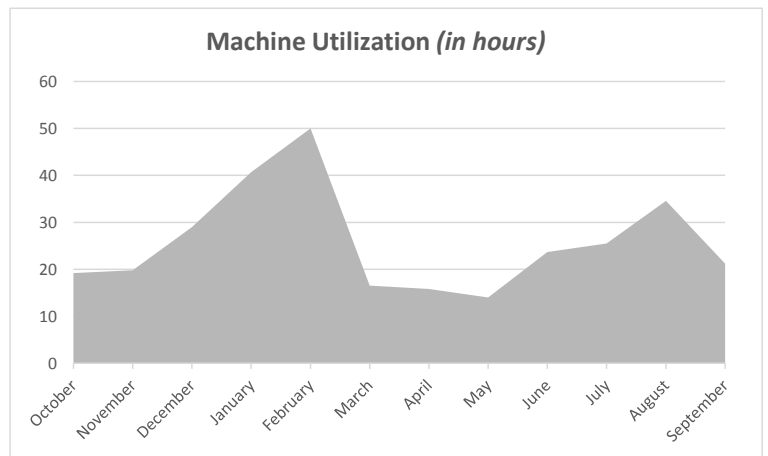
22617 - Parks



Total Annual Idle Percentage 39.2%



% of Fuel Expense Spent on Idle Time 14.01%



TOTAL MACHINE HOURS 580.8

Machine Utilization: Below Average