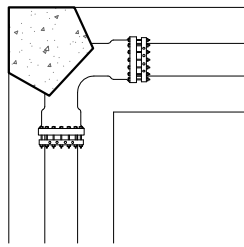
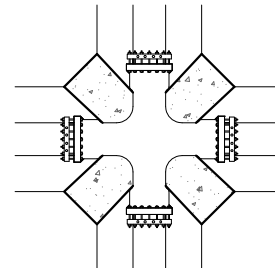


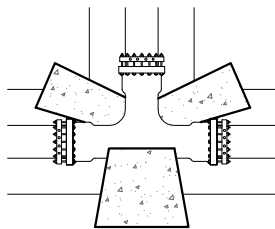
THRUST BLOCKING



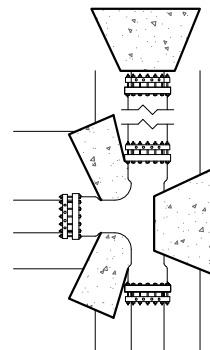
BEND



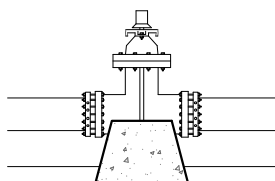
CROSS



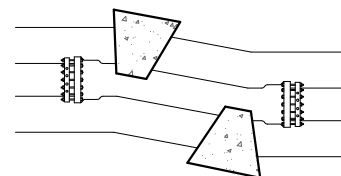
TEE



TEE WITH STUBOUT



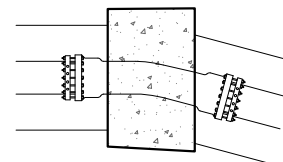
VALVE



OFFSET

NOTES:

1. ALL MECHANICAL JOINT CONNECTIONS ON BENDS AND VALVES SHALL BE MECHANICALLY RESTRAINED AND CONCRETE BLOCKED AS SHOWN.
2. ALL CONCRETE SHALL BE 3,000 P.S.I.
3. ALL STUB OUT PIPE SECTIONS SHALL BE A MINIMUM OF 20' IN LENGTH UNLESS APPROVED OTHERWISE BY THE CITY
4. IF STUBOUT ENCOMPASSES MORE THAN ONE JOINT, BELL JOINT RESTRAINTS SHALL BE USED.
5. ALL DUCTILE IRON SHALL BE WRAPPED IN MINIMUM 3 MIL. POLY SHEETING



VERTICAL BEND