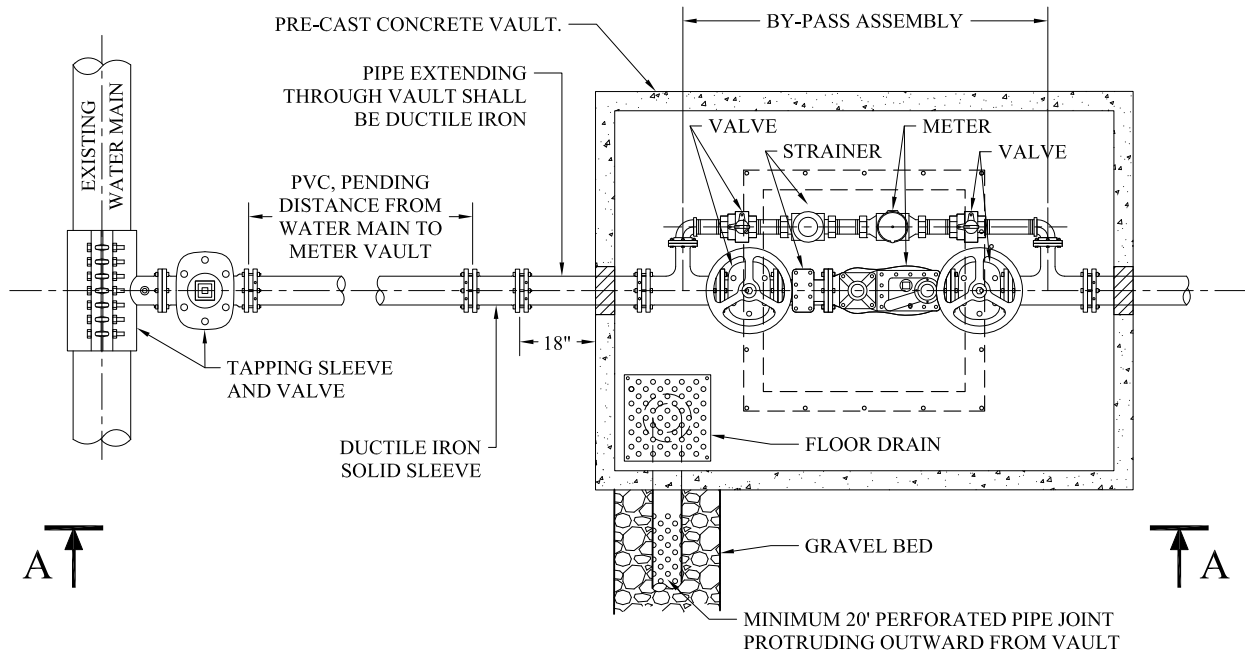
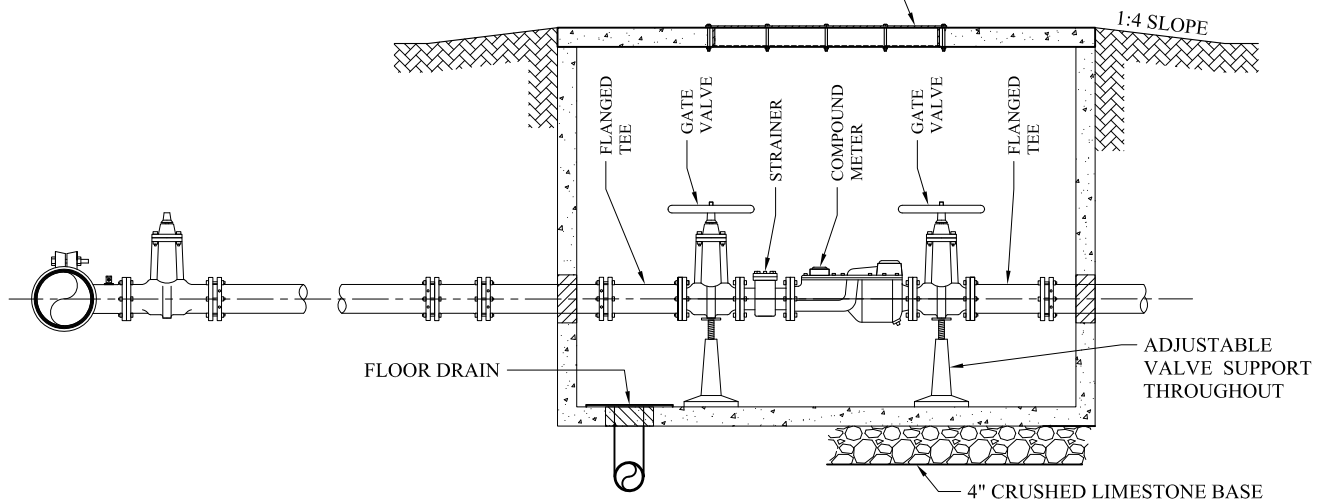


LARGE METER VAULT FOR 3" METERS AND LARGER



PLAN VIEW

30" X 42" ANGLE FRAMED ACCESS HATCH WITH H-20 LOAD RATING. HATCH SHALL BE LOCKABLE AND HAVE SPRING ASSISTED OPENING AND A HOLD-OPEN ARM.



SECTION A-A

NOTES:

1. WATER METERS AND STRAINERS TO BE PROVIDED BY CITY OF SAN ANGELO.
2. STANDARD BYPASS PIPING AND METER SIZES ARE 2" BRASS FOR 3" & 4" PRIMARY METERS AND 4" DUCTILE IRON FOR PRIMARY METERS LARGER THAN 4".
3. PIPE JOINTS INSIDE VAULT SHALL BE FLANGED. MECHANICAL JOINT CONNECTIONS OUTSIDE VAULT SHALL BE MECHANICALLY RESTRAINED.
4. VAULT SHALL BE PLACED ON 4" OF COMPACTED CRUSHED LIMESTONE BASE.
5. FLOOR DRAIN SHALL DISCHARGE TO MINIMUM 20' JOINT OF 4" PERFORATED PIPE WITH A MINIMUM 1 CUBIC YARD OF CRUSHED STONE DRAIN BED. NO PORTION OF DRAIN BED SHALL BE UNDERNEATH VAULT.
6. TYPE OF BACKFLOW PREVENTION DEVICE TO BE DETERMINED BASED ON TCEQ REGULATIONS.
7. BACKFLOW PREVENTION DEVICE SHALL TYPICALLY BE LOCATED IMMEDIATELY AFTER METER VAULT IN SEPARATE ENCLOSURE. IN NO CASE SHALL THERE BE A SERVICE PIPE CONNECTION ALLOWED BETWEEN METER ASSEMBLY AND BACKFLOW DEVICE.

CITY OF SAN ANGELO

LARGE METER VAULT
FOR 3" METERS AND LARGER

JUNE 2016

W-SL-3