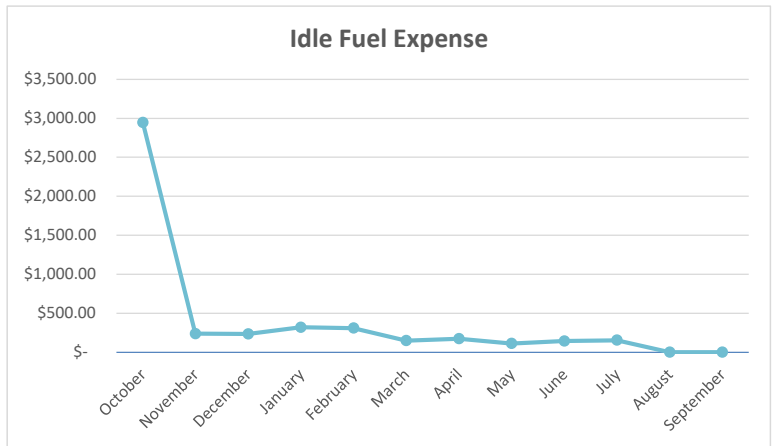
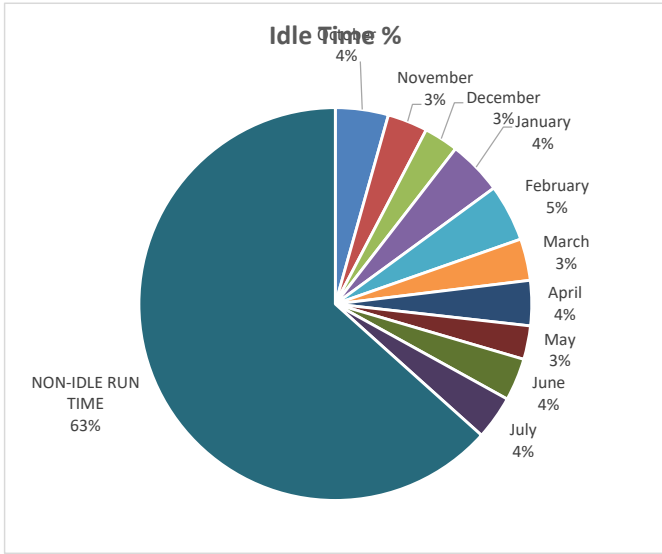
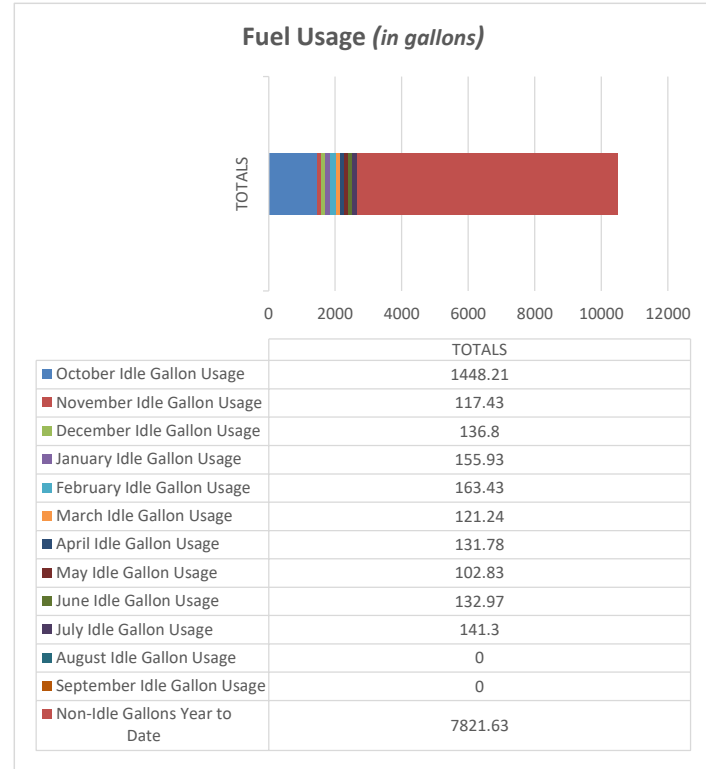
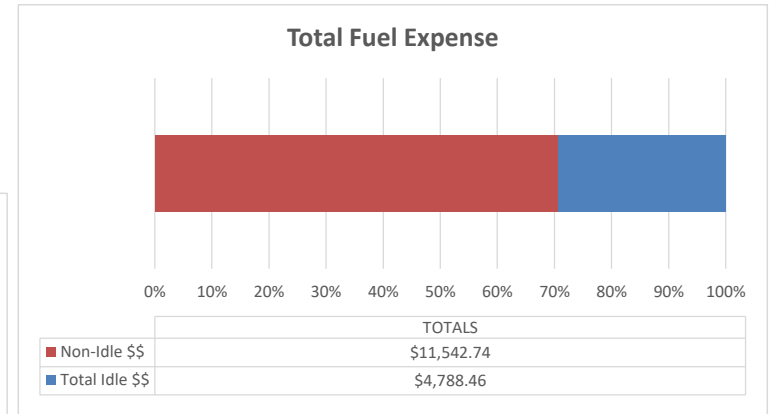


Backhoe Report

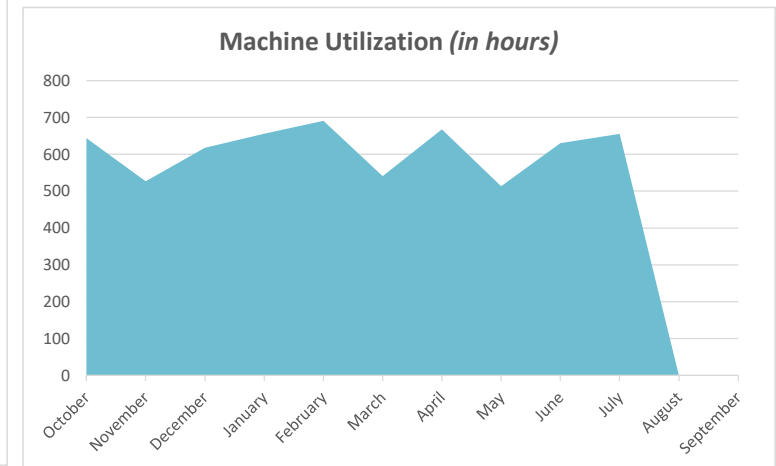
All Machines



Total Annual Idle Percentage 36.6%



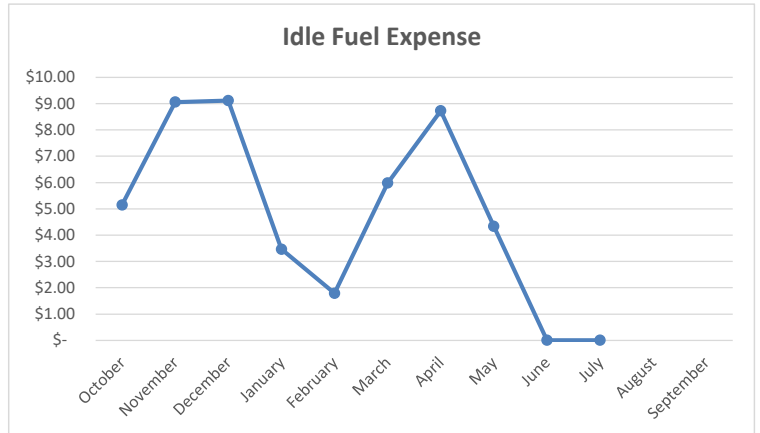
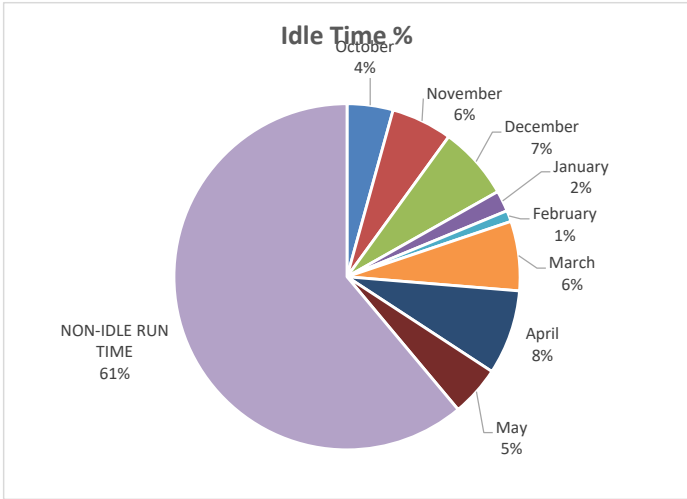
% of Fuel Expense Spent on Idle Time 29.32%



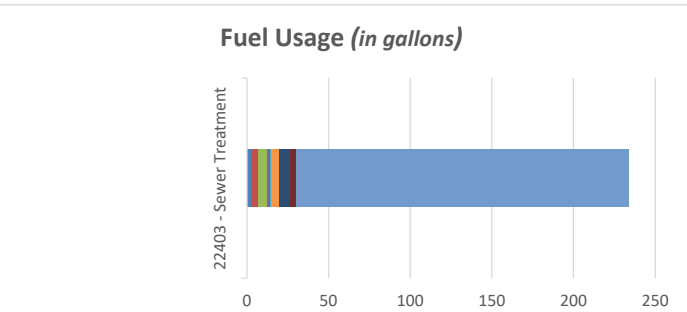
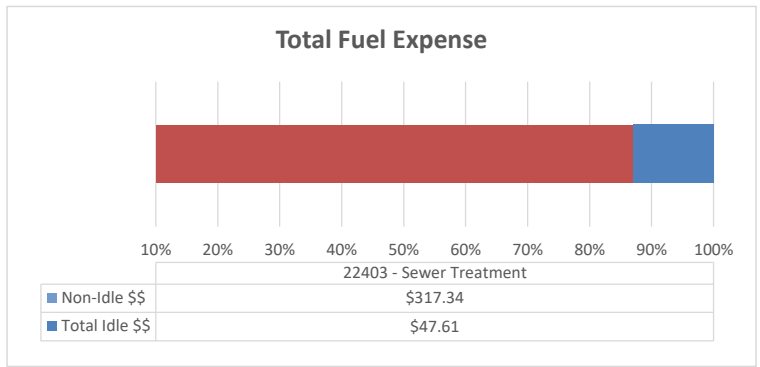
Average Machine Hours 428.5

Backhoe Report

22403 - Sewer Treatment

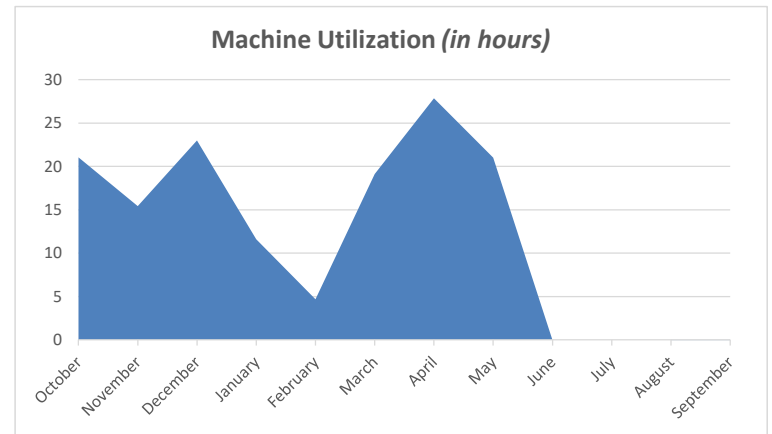


Total Annual Idle Percentage 38.9%



22403 - Sewer Treatment	
October Idle Gallon Usage	2.53
November Idle Gallon Usage	4.44
December Idle Gallon Usage	5.3
January Idle Gallon Usage	1.69
February Idle Gallon Usage	0.94
March Idle Gallon Usage	4.86
April Idle Gallon Usage	6.56
May Idle Gallon Usage	3.95
June Idle Gallon Usage	0.00
July Idle Gallon Usage	0.00
August Idle Gallon Usage	0.00
September Idle Gallon Usage	0.00
Non-Idle Gallons Year to Date	203.78

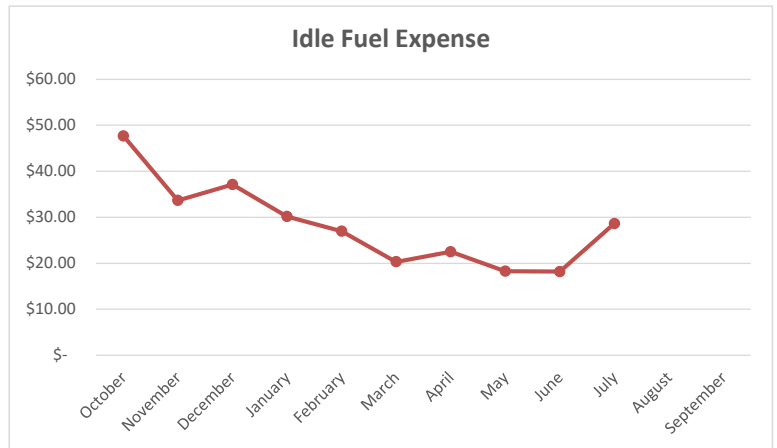
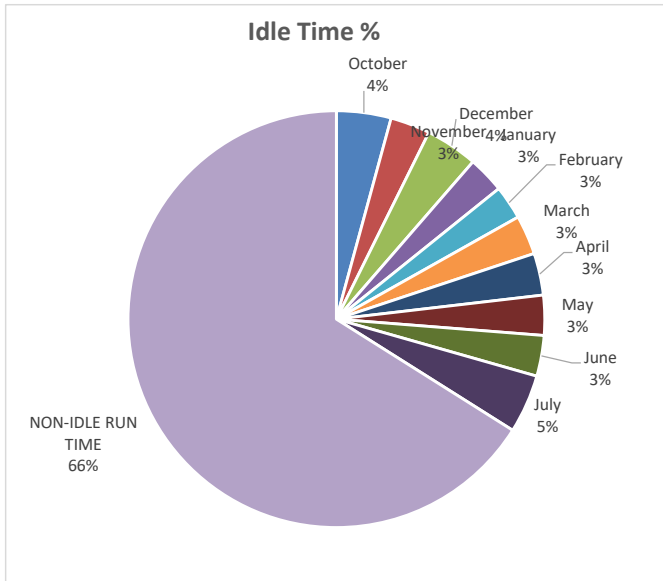
% of Fuel Expense Spent on Idle Time 13.04%



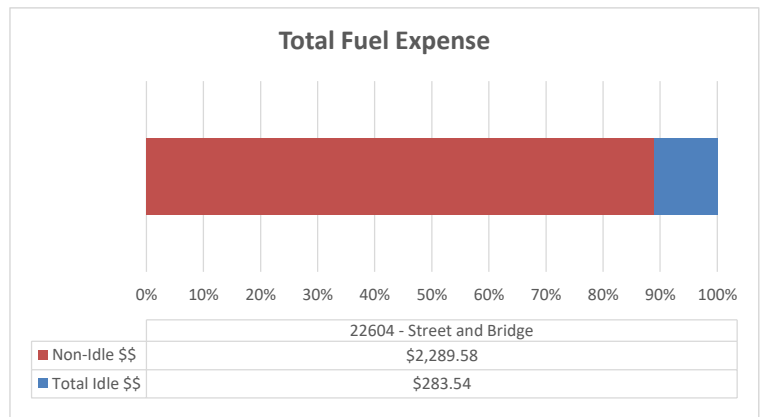
TOTAL MACHINE HOURS 1239

Backhoe Report

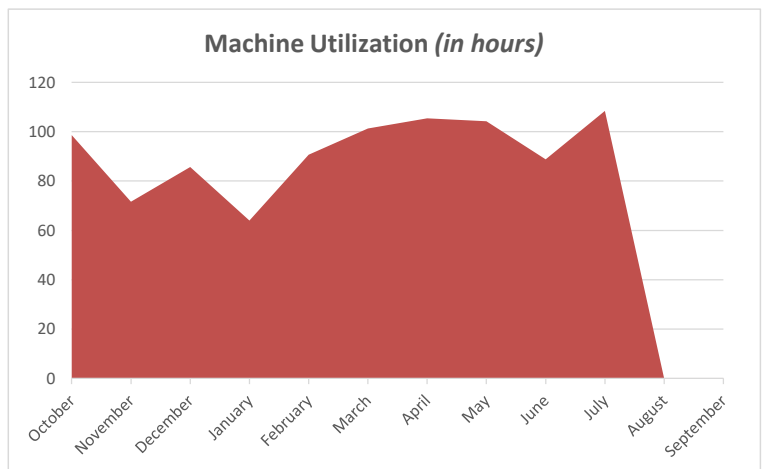
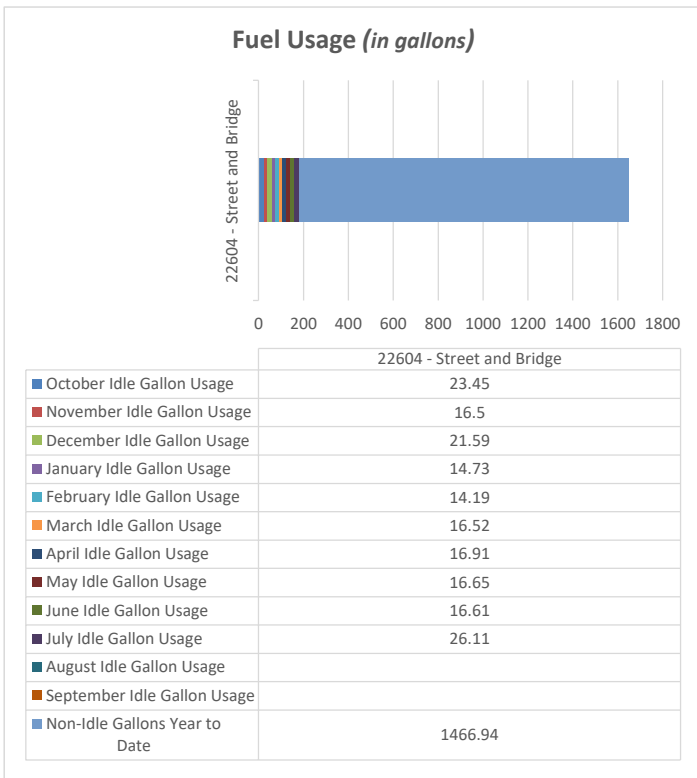
22604 - Street and Bridge



Total Annual Idle Percentage 34.0%



% of Fuel Expense Spent on Idle Time 11.02%



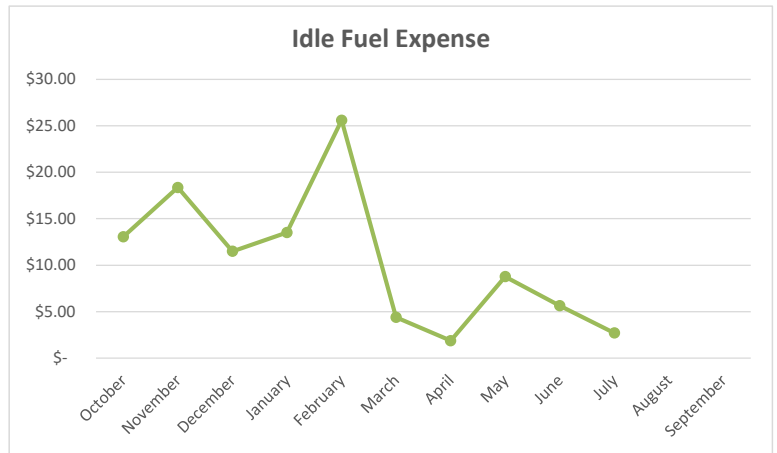
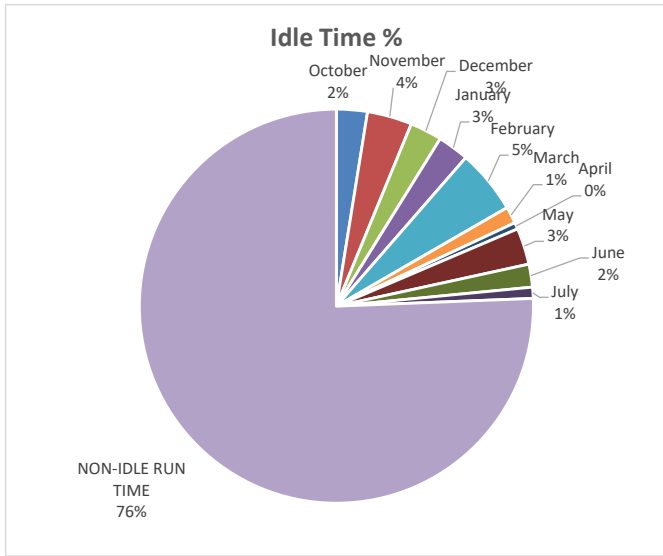
22604 TOTAL MACHINE HOURS 4581

FLEET AVERAGE TOTAL MACHINE HOURS 428.5

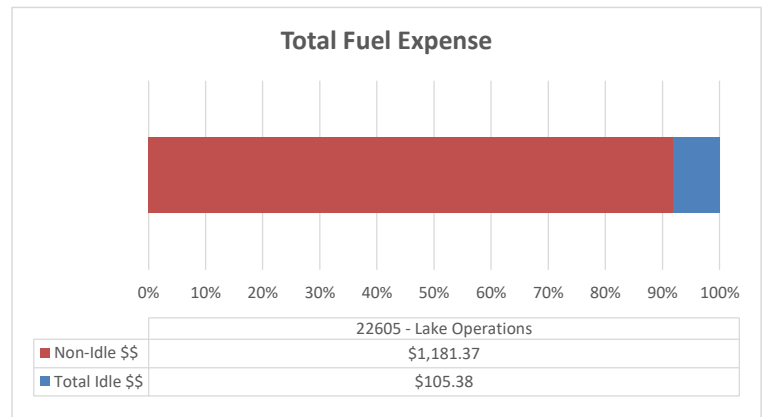
Machine Utilization: Above Average

Backhoe Report

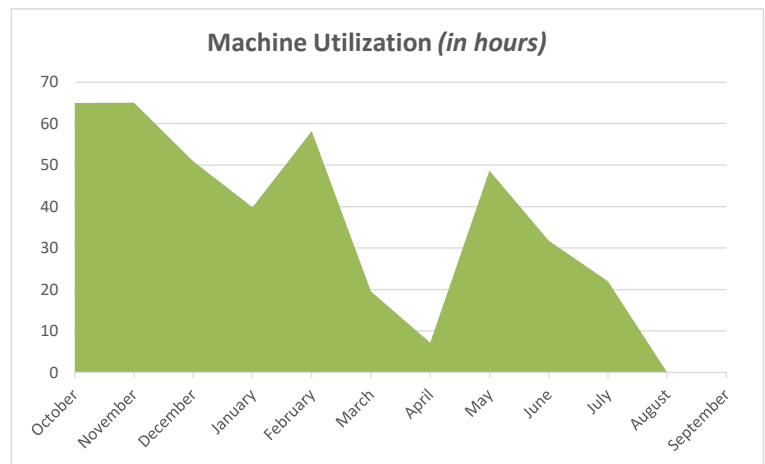
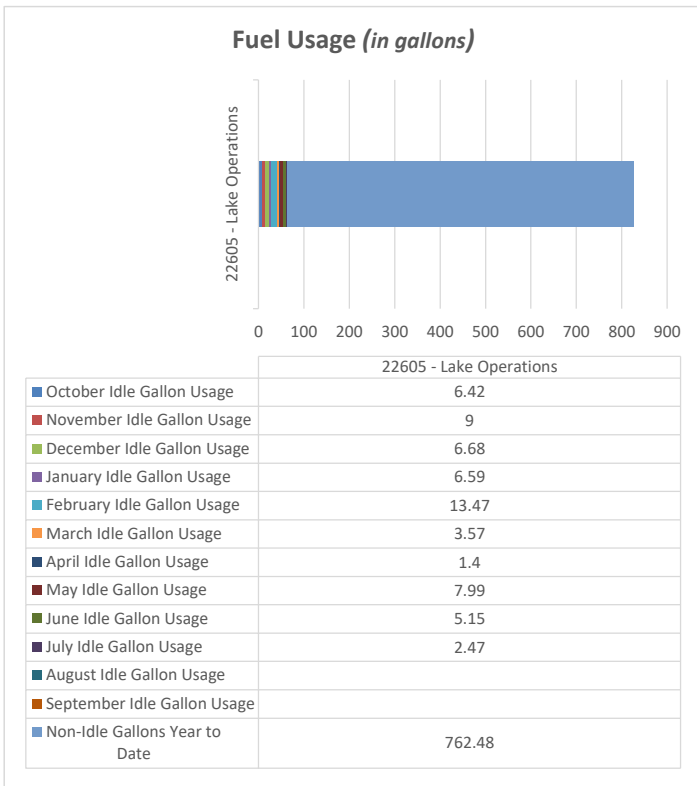
22605 - Lake Operations



Total Annual Idle Percentage 24.4%



% of Fuel Expense Spent on Idle Time 8.19%



22605 TOTAL MACHINE HOURS

2406

FLEET AVERAGE TOTAL MACHINE HOURS

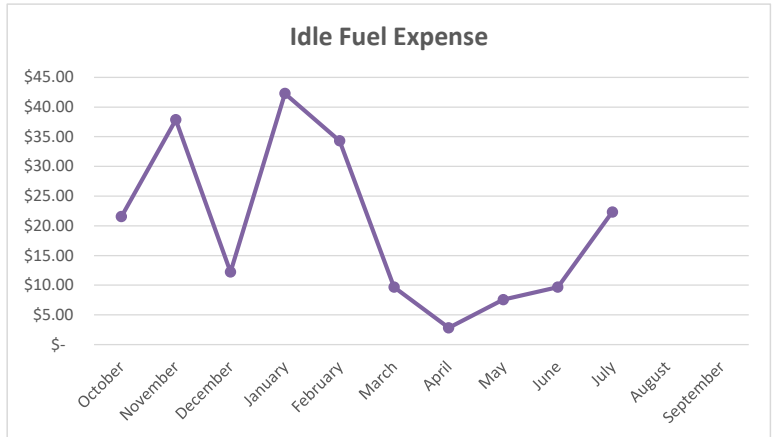
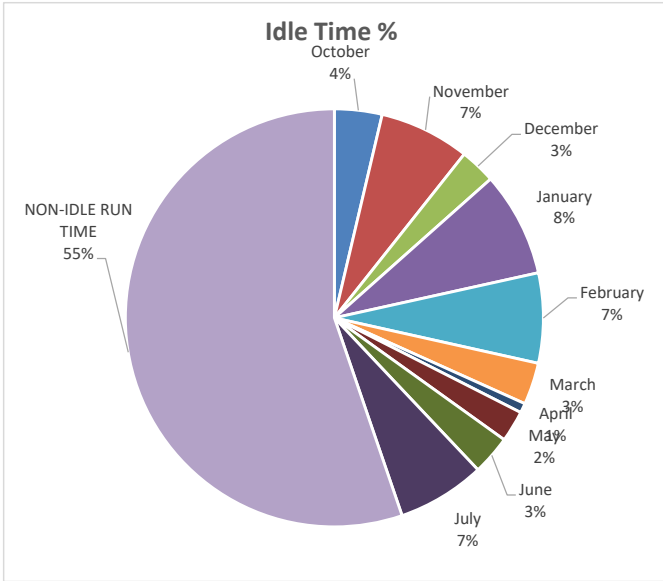
428.5

Machine Utilization:

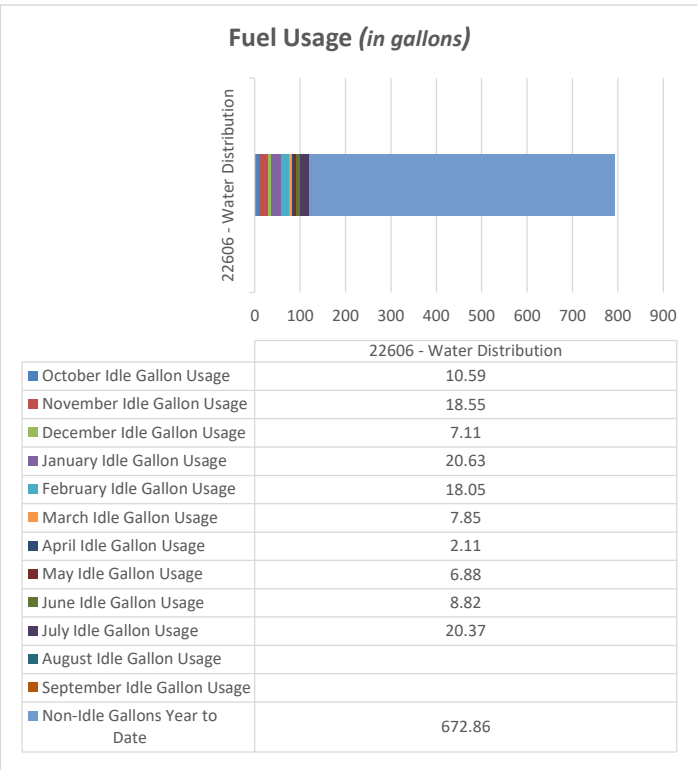
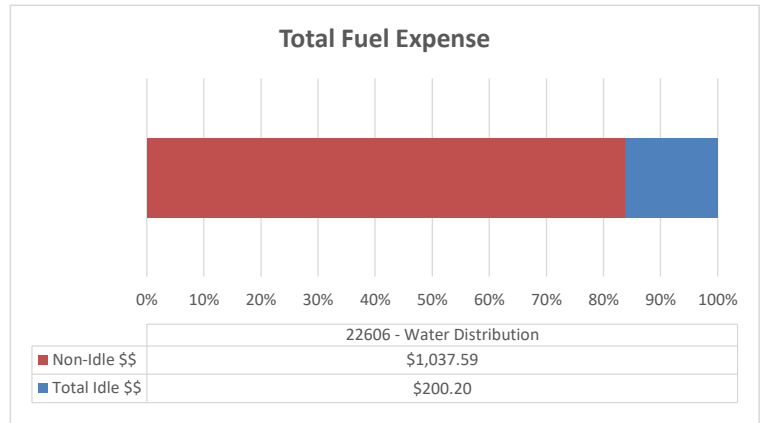
Above Average

Backhoe Report

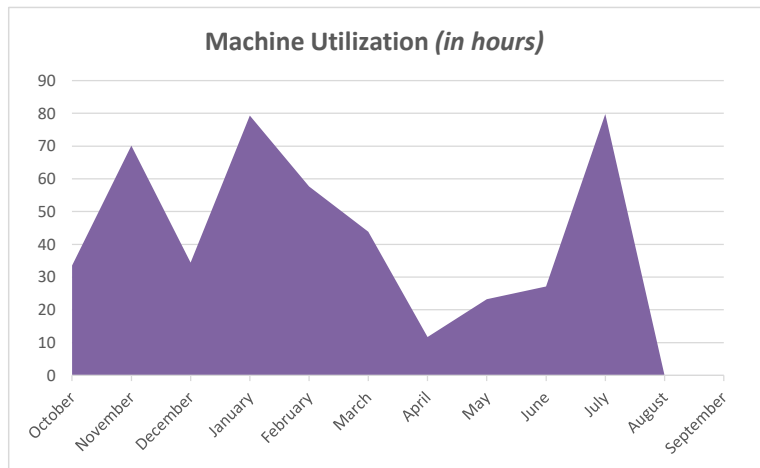
22606 - Water Distribution



Total Annual Idle Percentage 44.7%



% of Fuel Expense Spent on Idle Time 16.17%



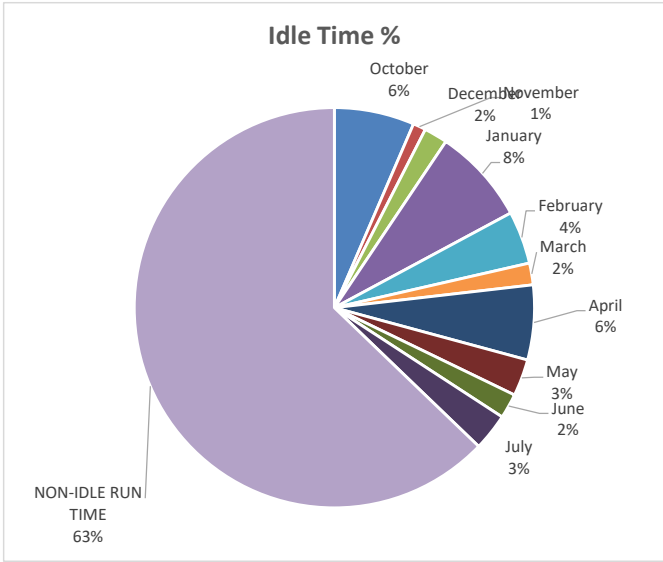
22606 TOTAL MACHINE HOURS 3057

FLEET AVERAGE TOTAL MACHINE HOURS 428.5

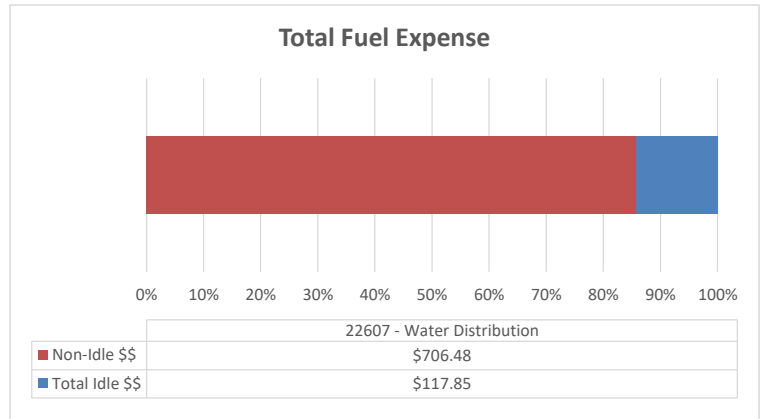
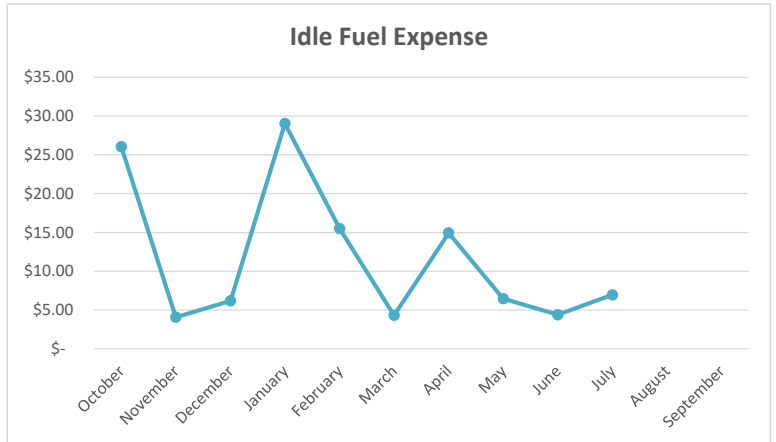
Machine Utilization: Above Average

Backhoe Report

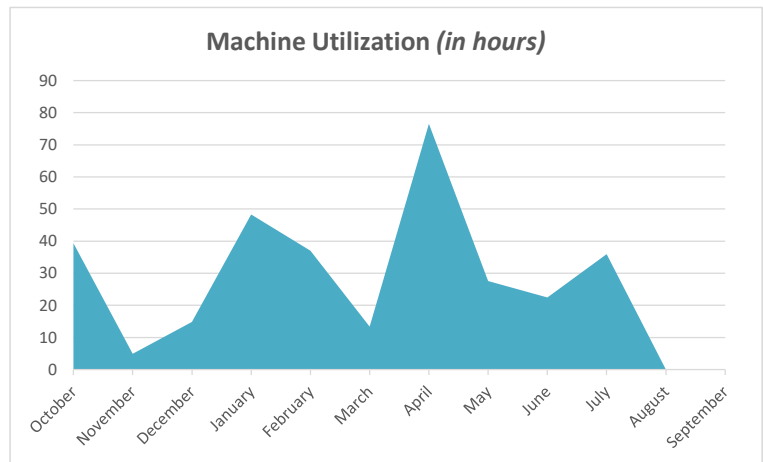
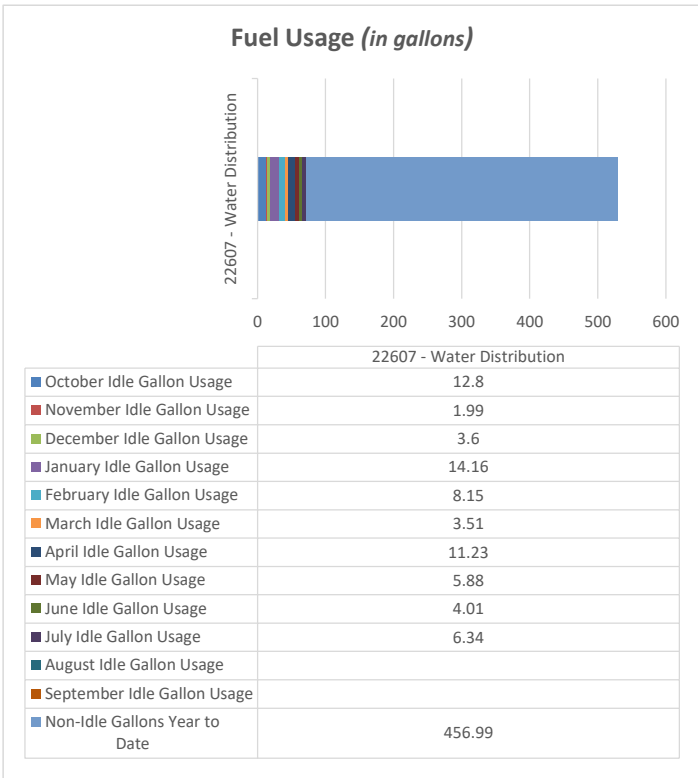
22607 - Water Distribution



Total Annual Idle Percentage 37.2%



% of Fuel Expense Spent on Idle Time 14.30%



22607 TOTAL MACHINE HOURS 2443

2443

FLEET AVERAGE TOTAL MACHINE HOURS 428.5

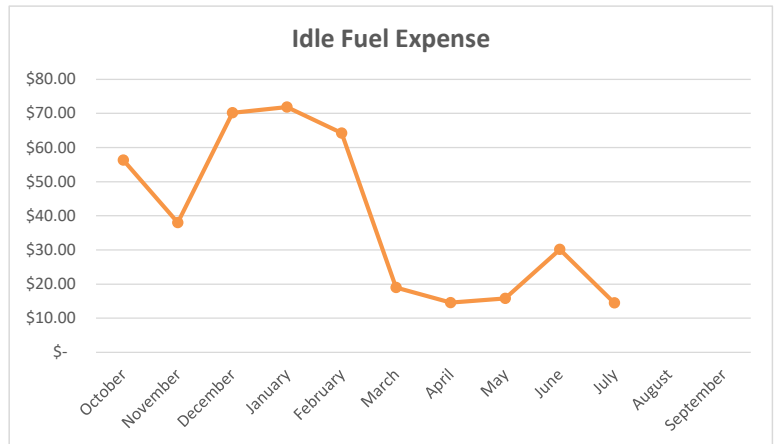
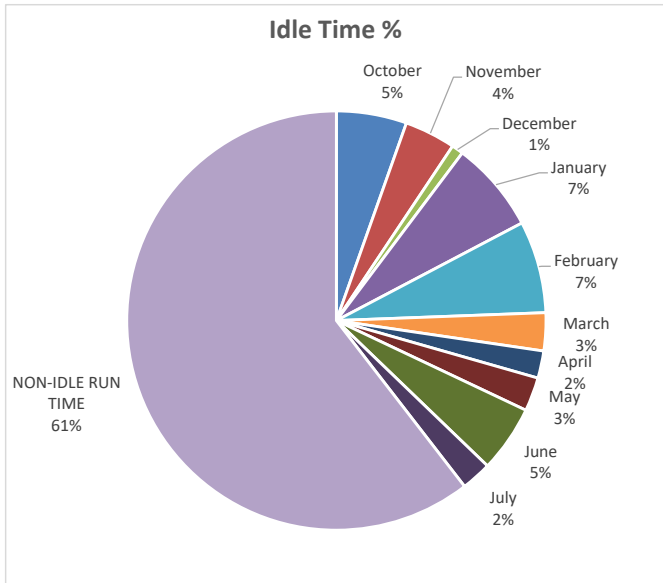
428.5

Machine Utilization:

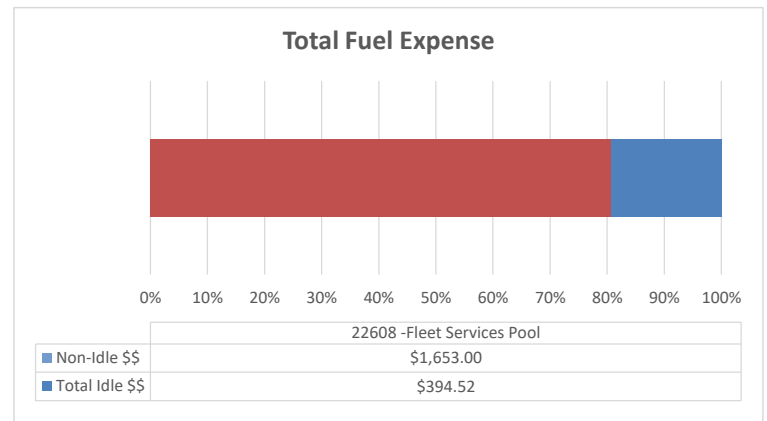
Above Average

Backhoe Report

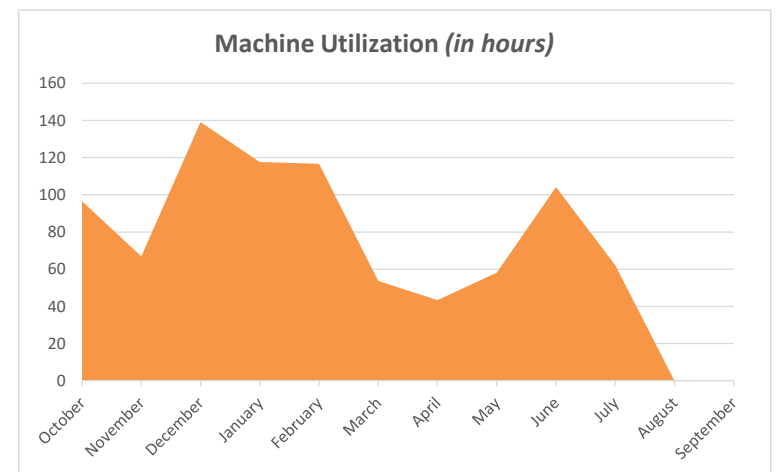
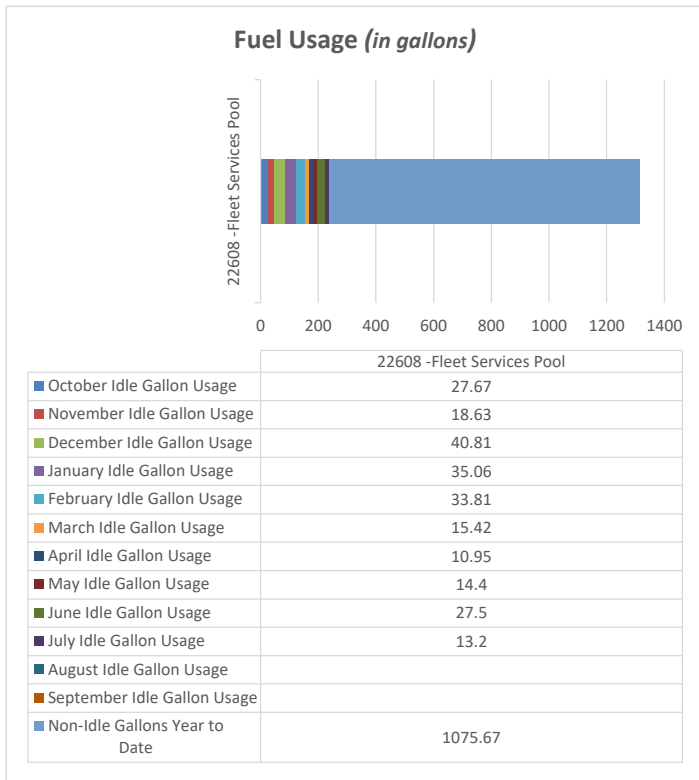
22608 -Fleet Services Pool



Total Annual Idle Percentage 39.5%



% of Fuel Expense Spent on Idle Time 19.27%



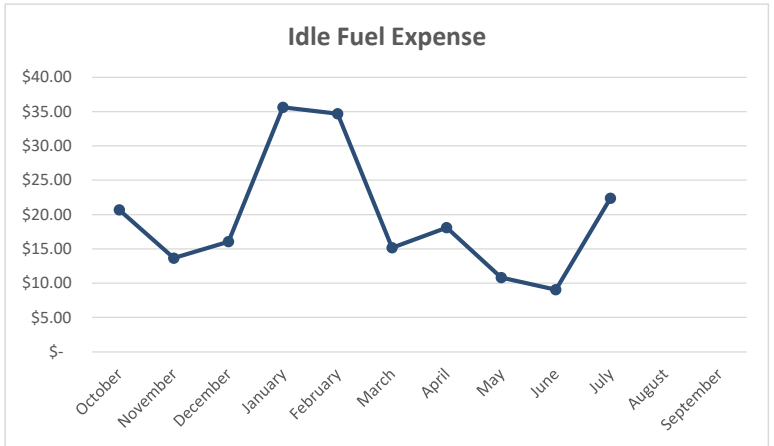
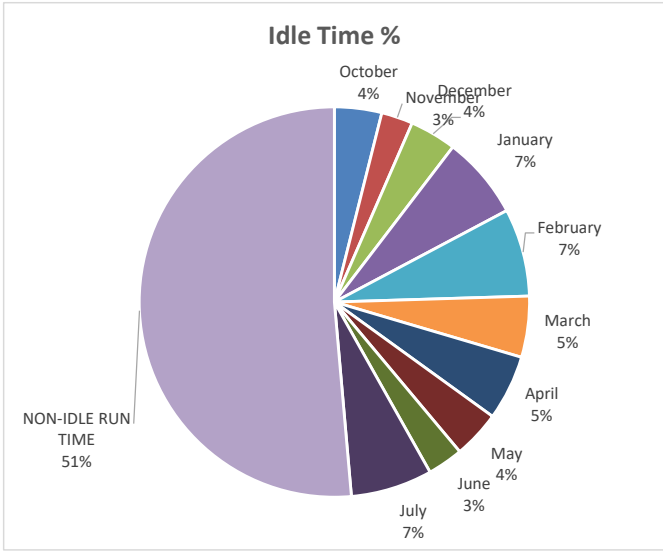
22608 TOTAL MACHINE HOURS 2934

FLEET AVERAGE TOTAL MACHINE HOURS 428.5

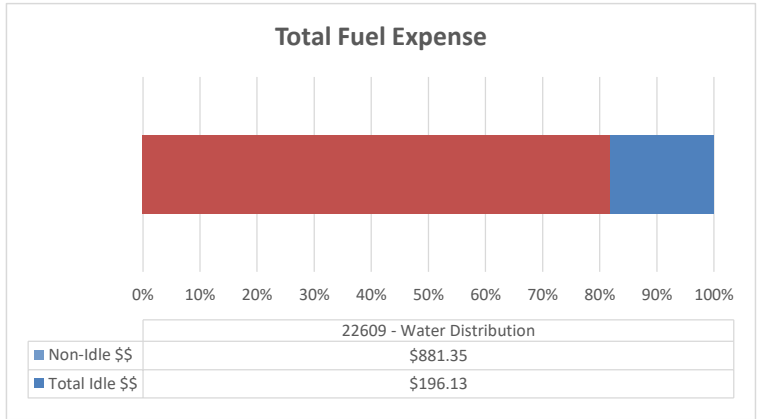
Machine Utilization: Above Average

Backhoe Report

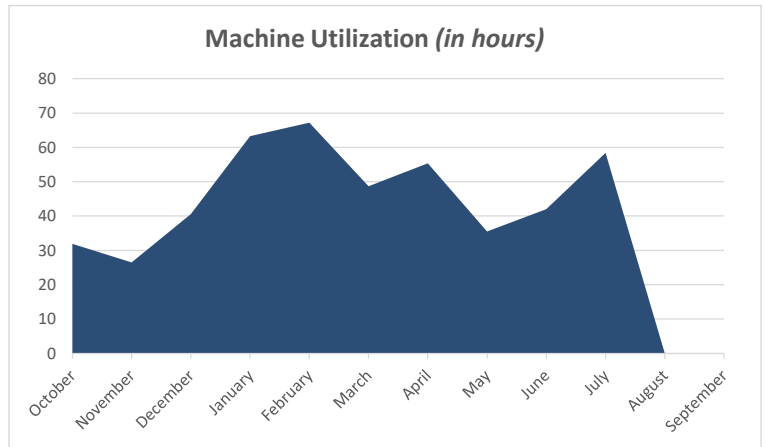
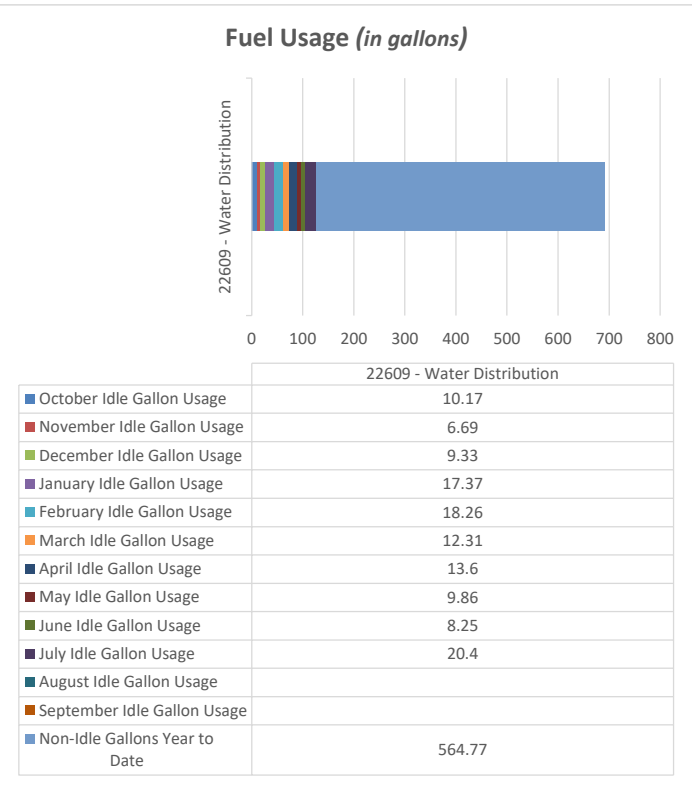
22609 - Water Distribution



Total Annual Idle Percentage 48.6%



% of Fuel Expense Spent on Idle Time 18.20%



22609 TOTAL MACHINE HOURS

4122

FLEET AVERAGE TOTAL MACHINE HOURS

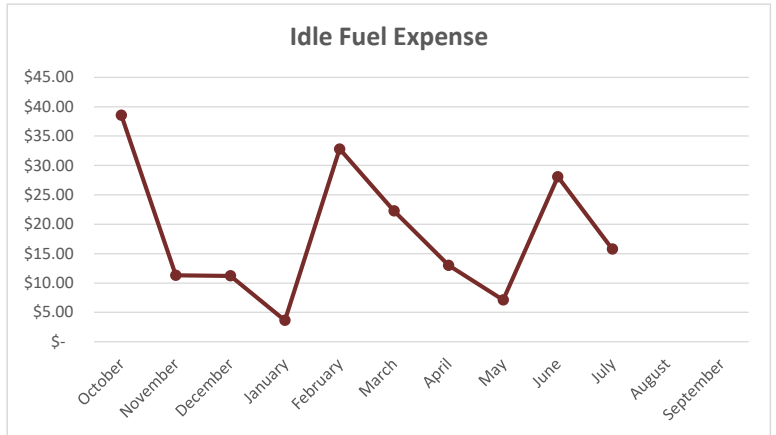
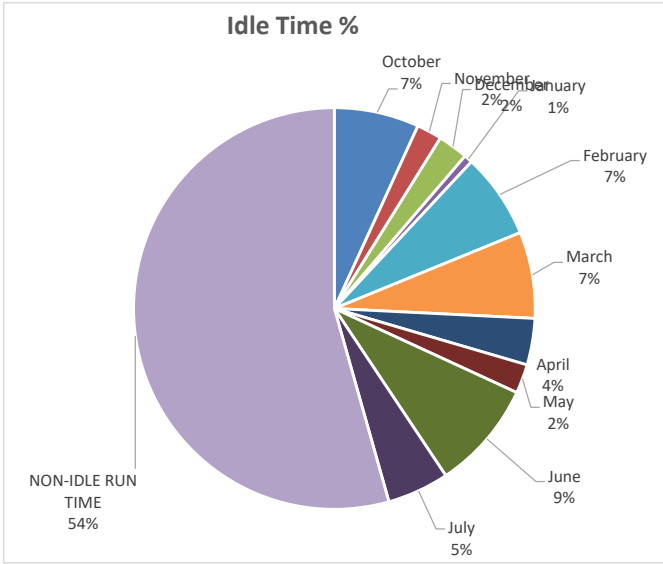
428.5

Machine Utilization:

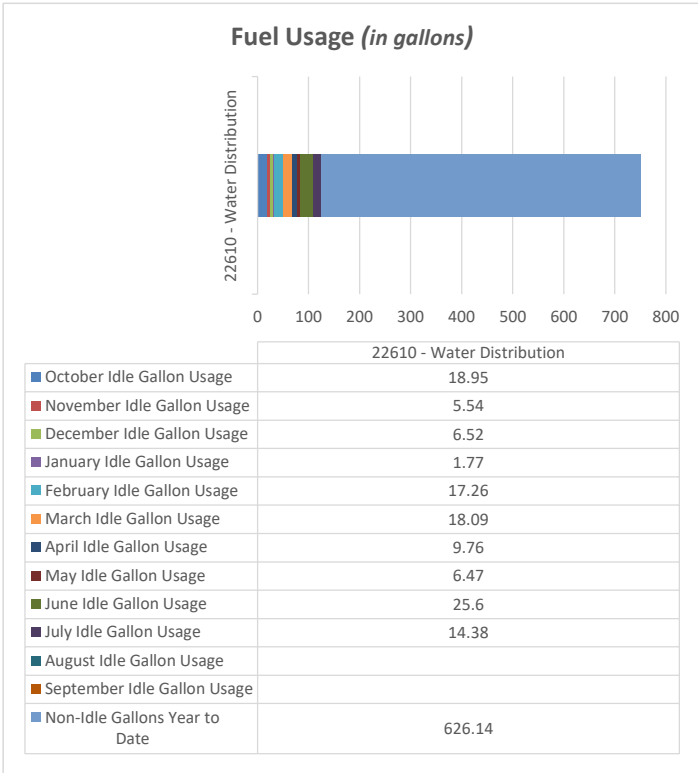
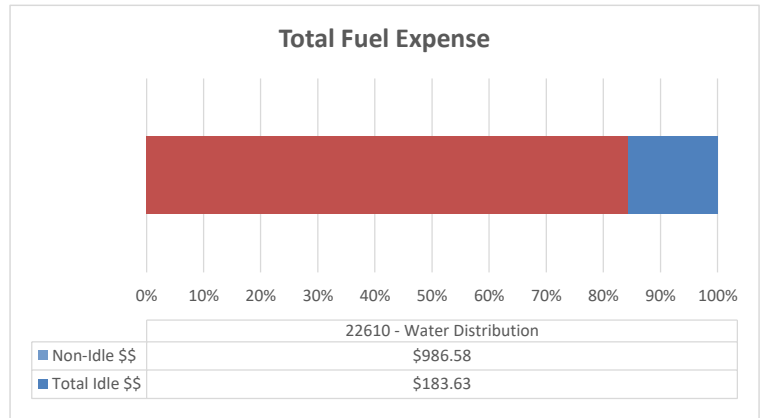
Above Average

Backhoe Report

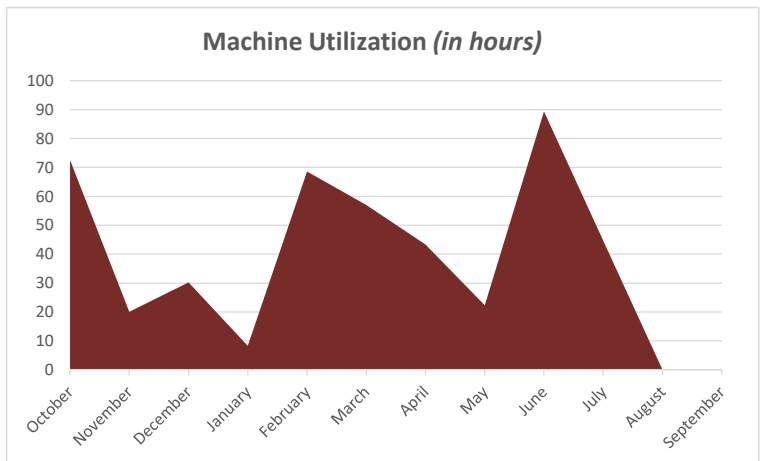
22610 - Water Distribution



Total Annual Idle Percentage 45.6%



% of Fuel Expense Spent on Idle Time 15.69%



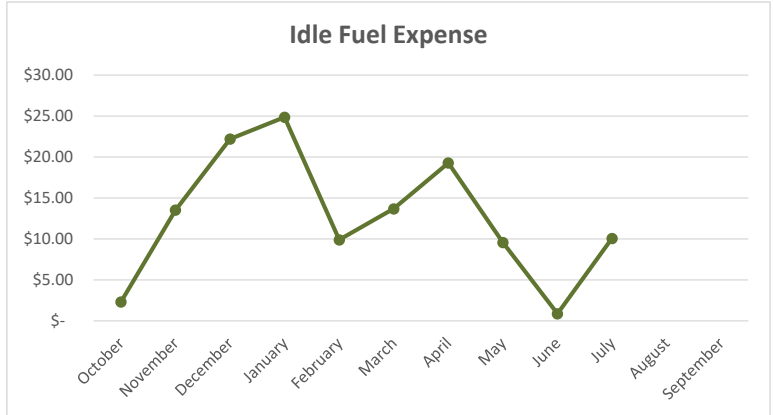
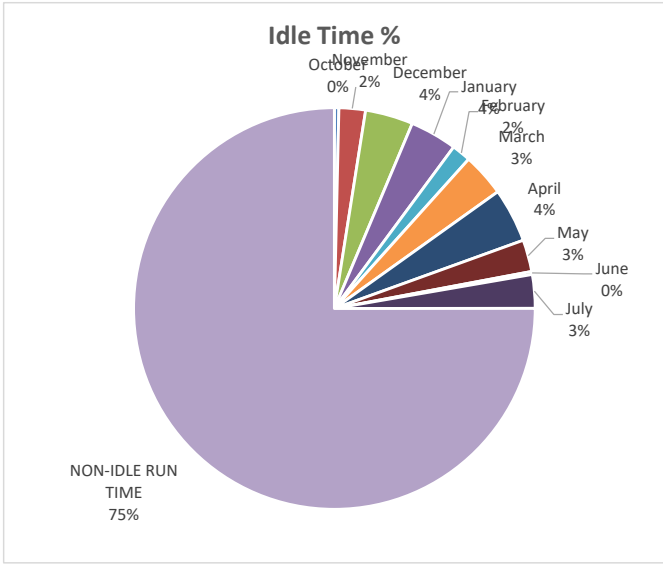
22610 TOTAL MACHINE HOURS 2919

FLEET AVERAGE TOTAL MACHINE HOURS 428.5

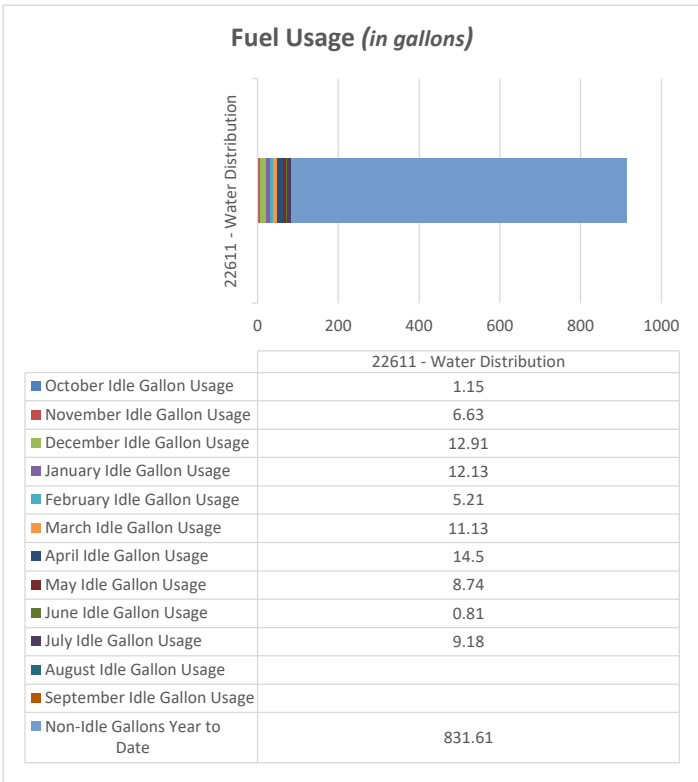
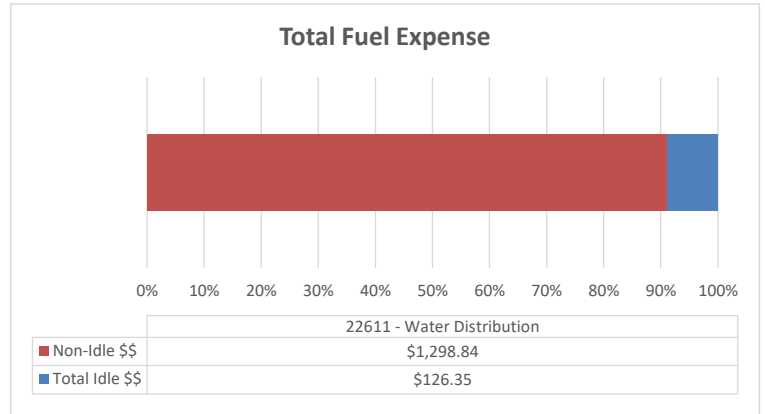
Machine Utilization: Above Average

Backhoe Report

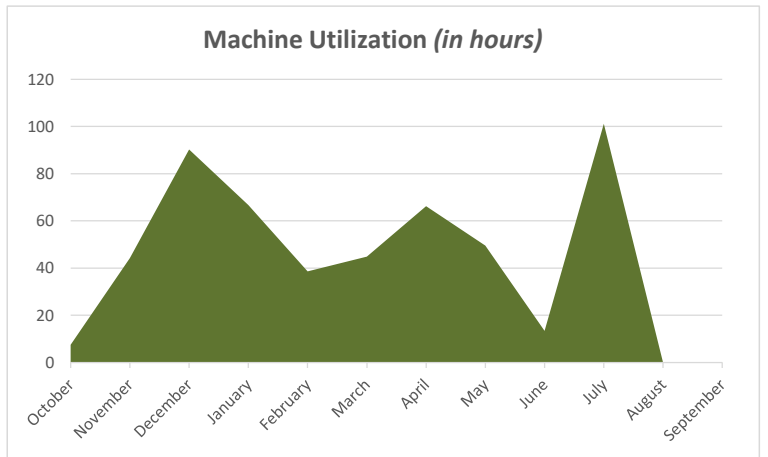
22611 - Water Distribution



Total Annual Idle Percentage 25.0%



% of Fuel Expense Spent on Idle Time 8.87%



22611 TOTAL MACHINE HOURS

3148

FLEET AVERAGE TOTAL MACHINE HOURS

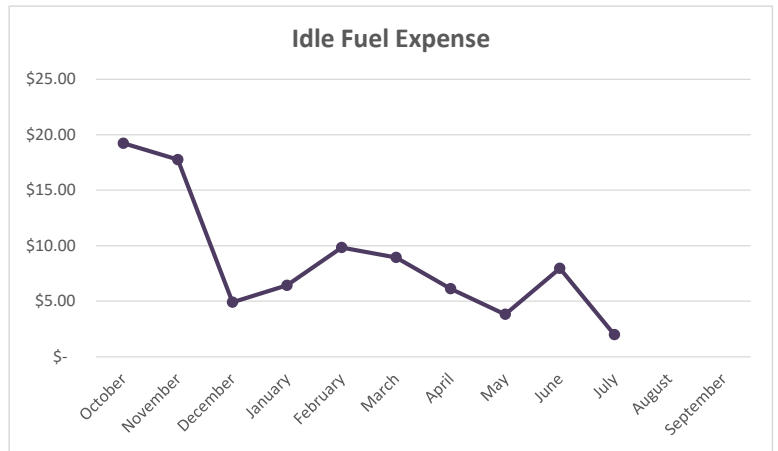
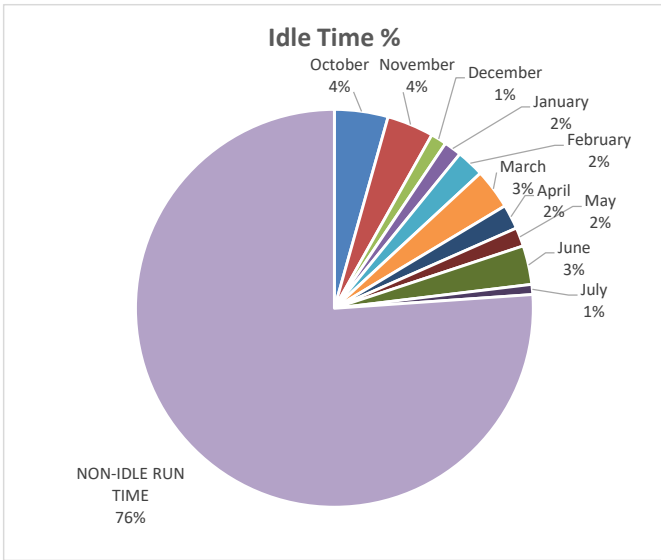
428.5

Machine Utilization:

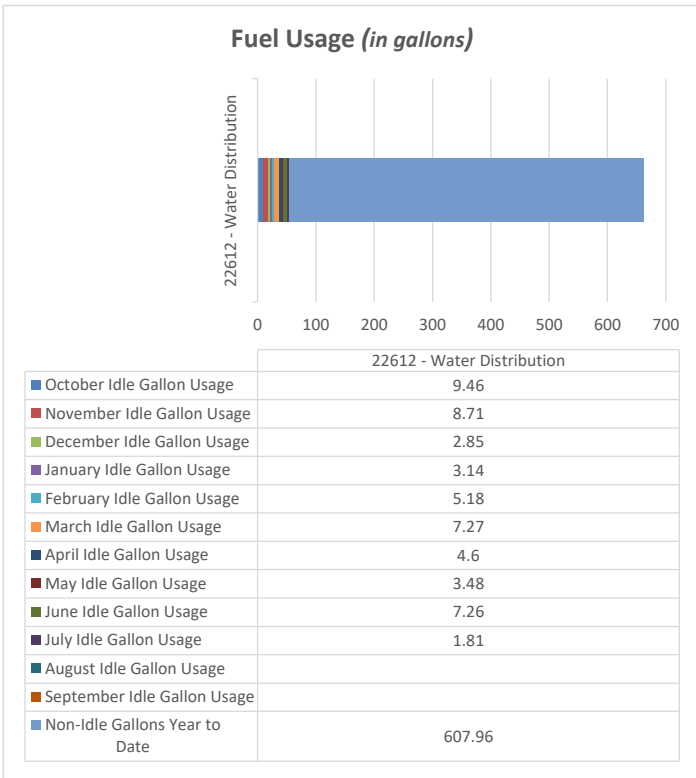
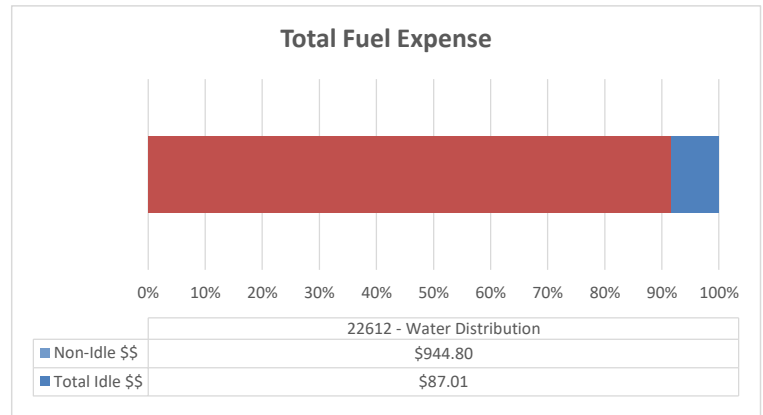
Above Average

Backhoe Report

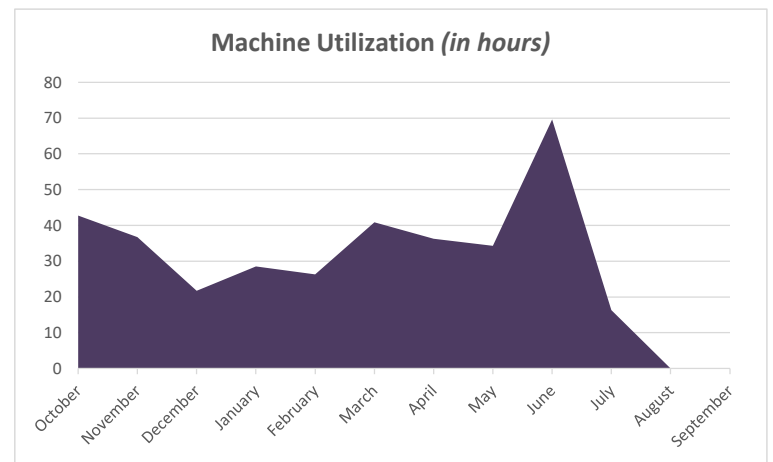
22612 - Water Distribution



Total Annual Idle Percentage 23.9%



% of Fuel Expense Spent on Idle Time 8.43%



22612 TOTAL MACHINE HOURS 2586

2586

FLEET AVERAGE TOTAL MACHINE HOURS 428.5

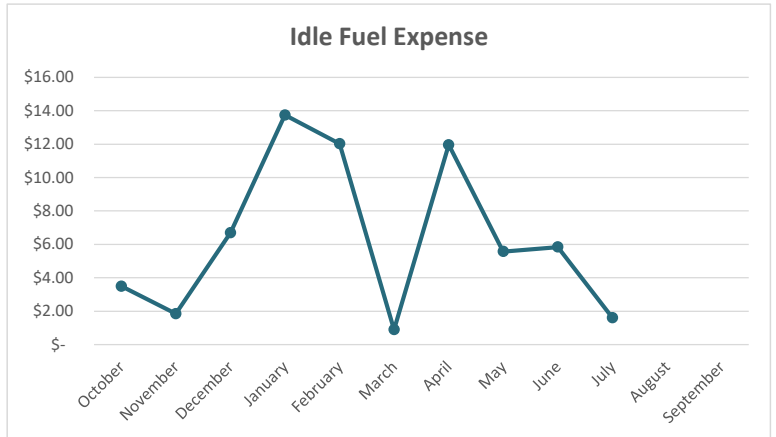
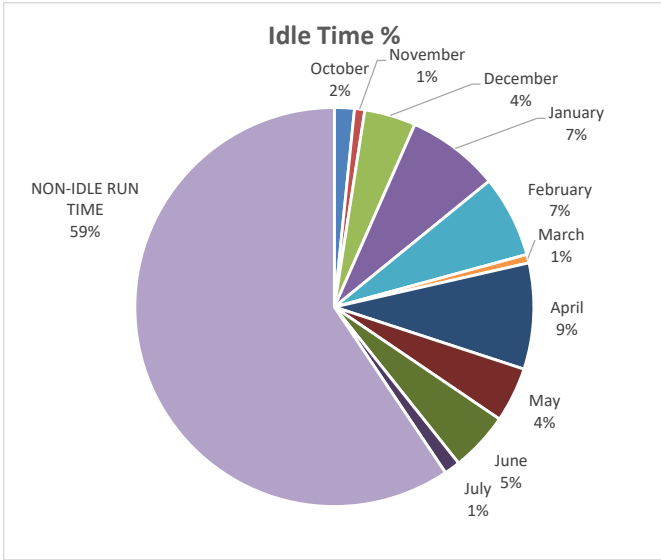
428.5

Machine Utilization:

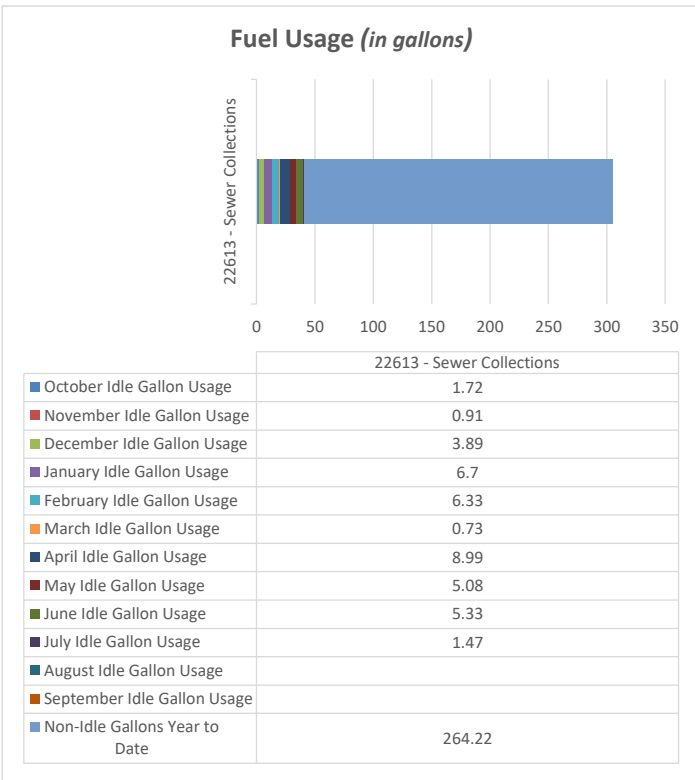
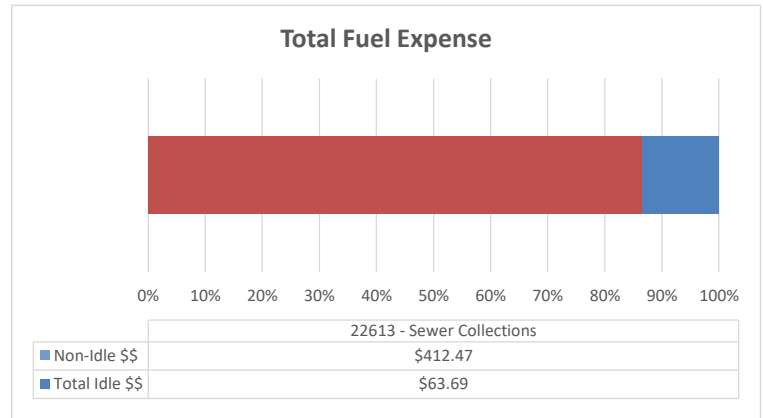
Above Average

Backhoe Report

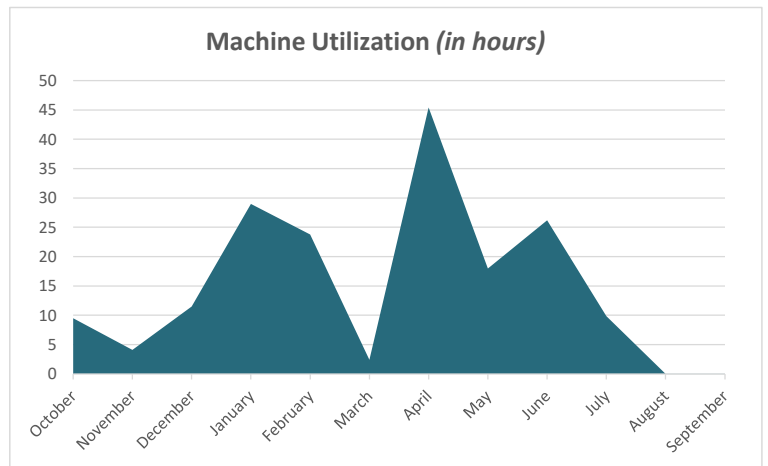
22613 - Sewer Collections



Total Annual Idle Percentage 40.6%



% of Fuel Expense Spent on Idle Time 13.38%



22613 TOTAL MACHINE HOURS

1286

FLEET AVERAGE TOTAL MACHINE HOURS

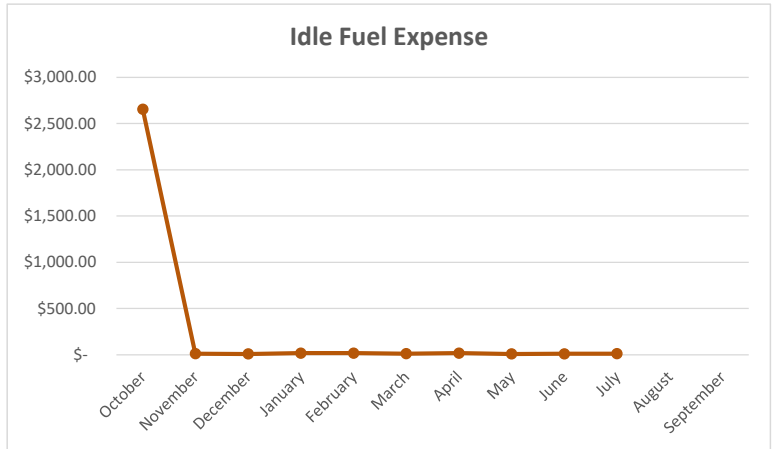
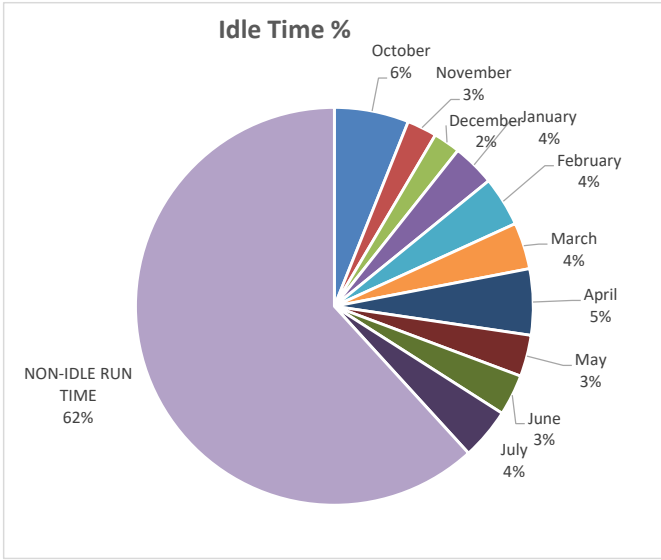
428.5

Machine Utilization:

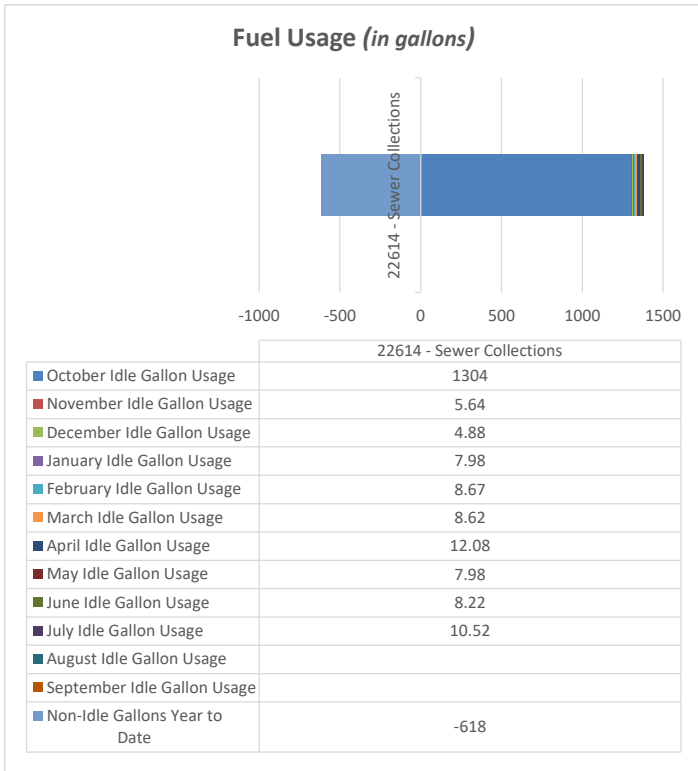
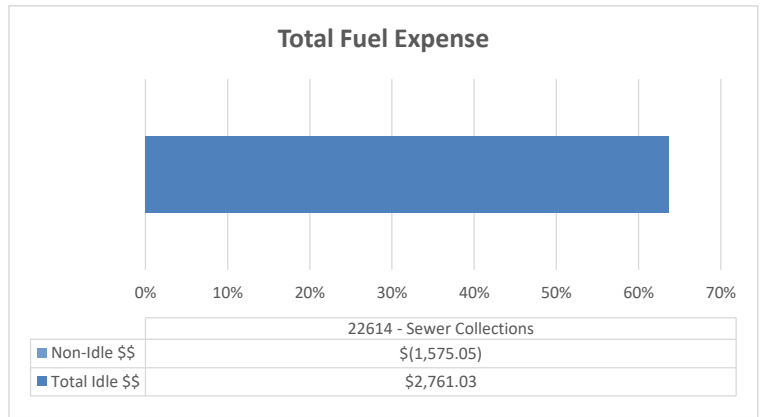
Above Average

Backhoe Report

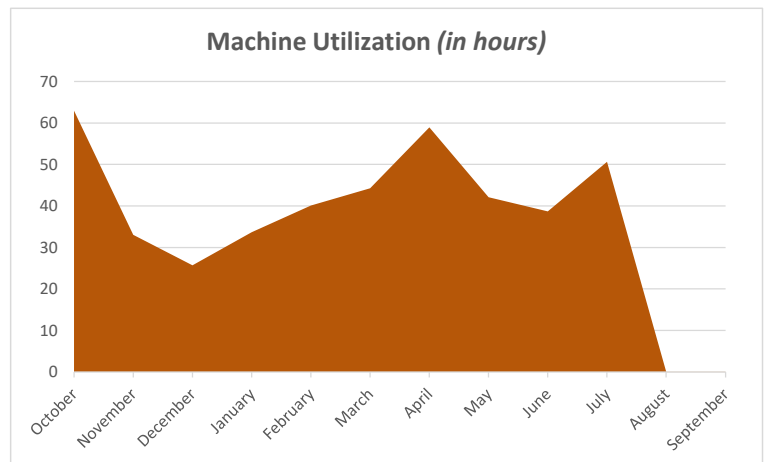
22614 - Sewer Collections



Total Annual Idle Percentage 38.2%



% of Fuel Expense Spent on Idle Time 232.81%



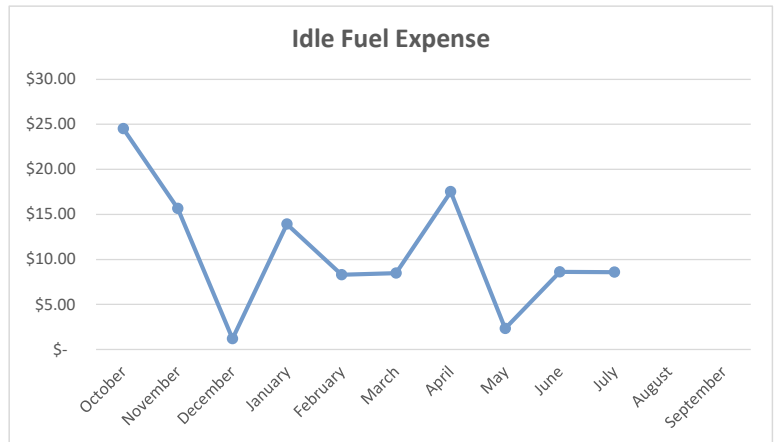
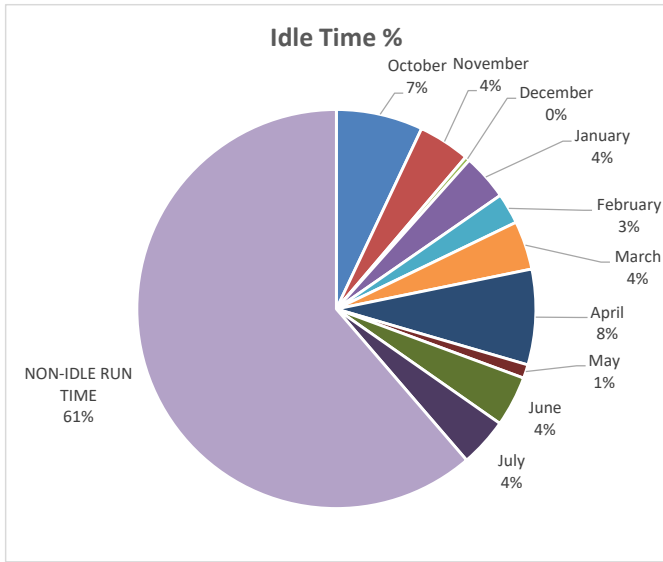
22614 TOTAL MACHINE HOURS 3160

FLEET AVERAGE TOTAL MACHINE HOURS 428.5

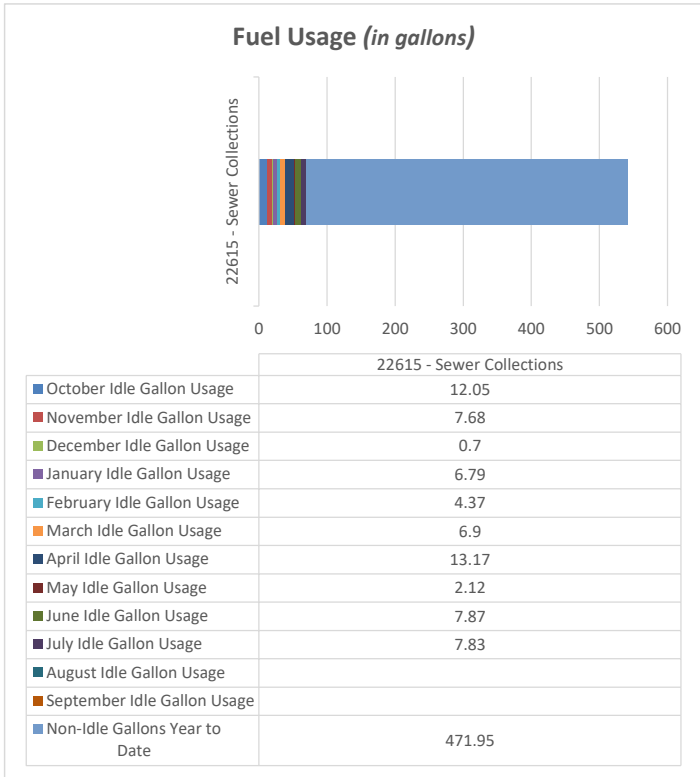
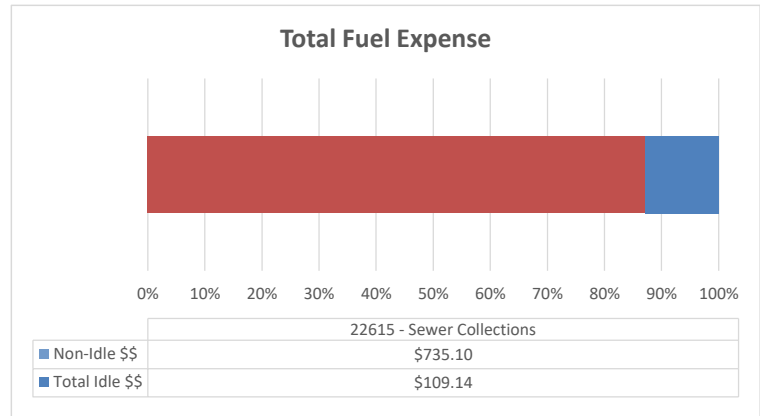
Machine Utilization: Above Average

Backhoe Report

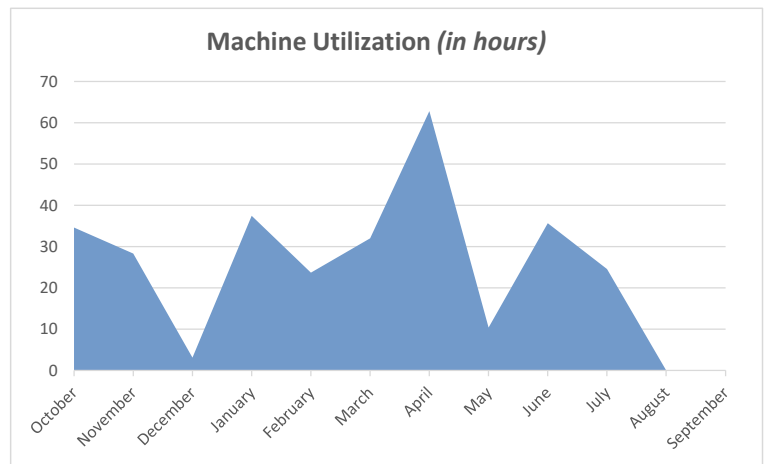
22615 - Sewer Collections



Total Annual Idle Percentage 38.7%



% of Fuel Expense Spent on Idle Time 12.93%



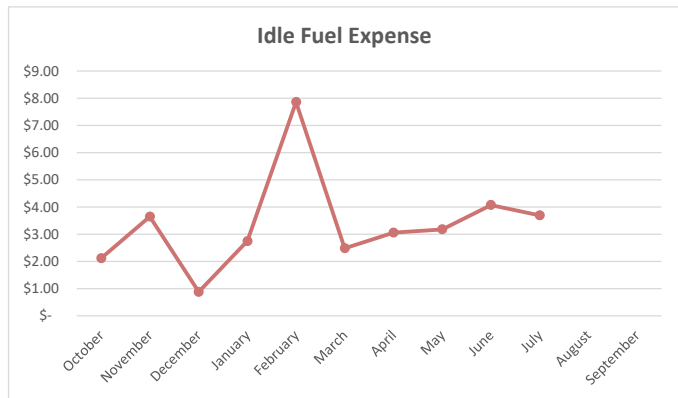
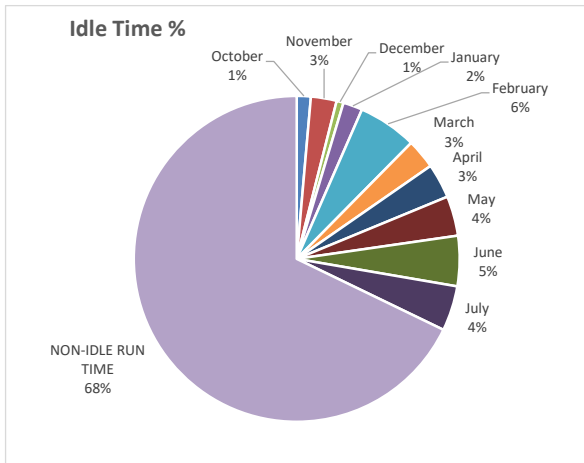
22615 TOTAL MACHINE HOURS 2141

FLEET AVERAGE TOTAL MACHINE HOURS 428.5

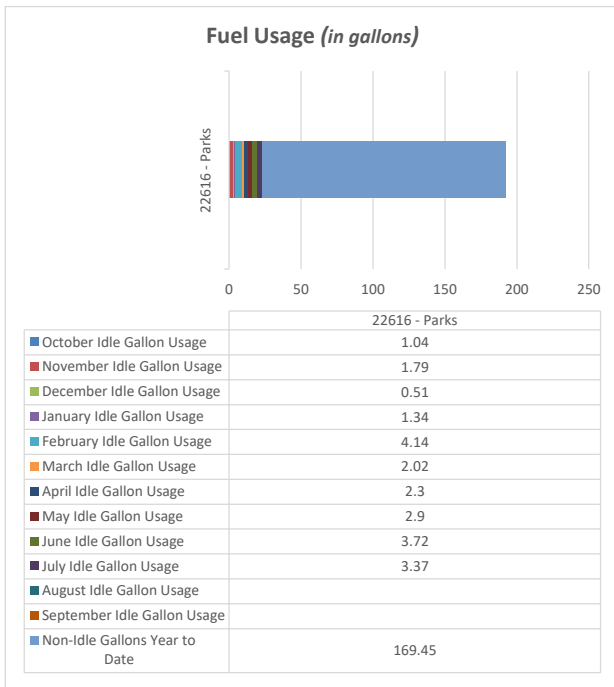
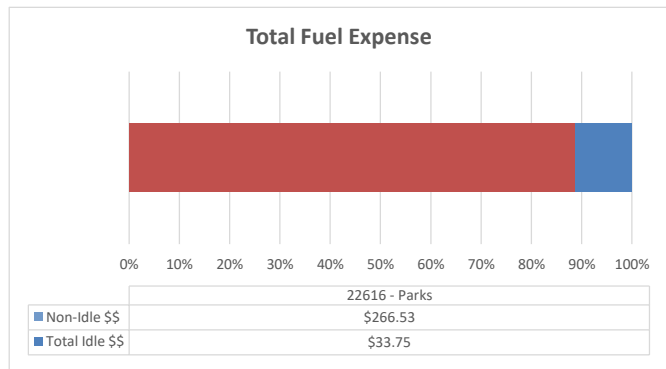
Machine Utilization: Above Average

Backhoe Report

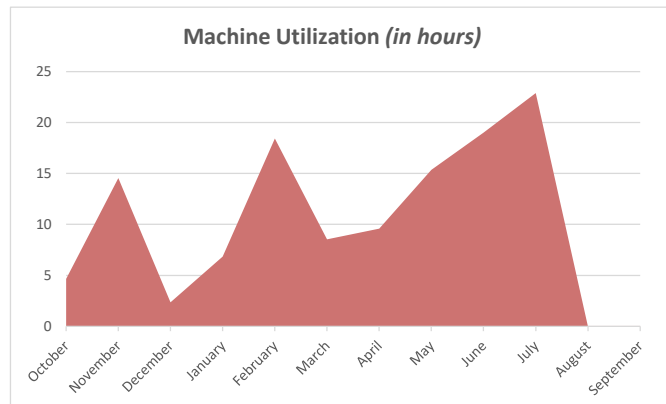
22616 - Parks



Total Annual Idle Percentage 32.2%



% of Fuel Expense Spent on Idle Time 11.24%



22616 TOTAL MACHINE HOURS

1762

FLEET AVERAGE TOTAL MACHINE HOURS

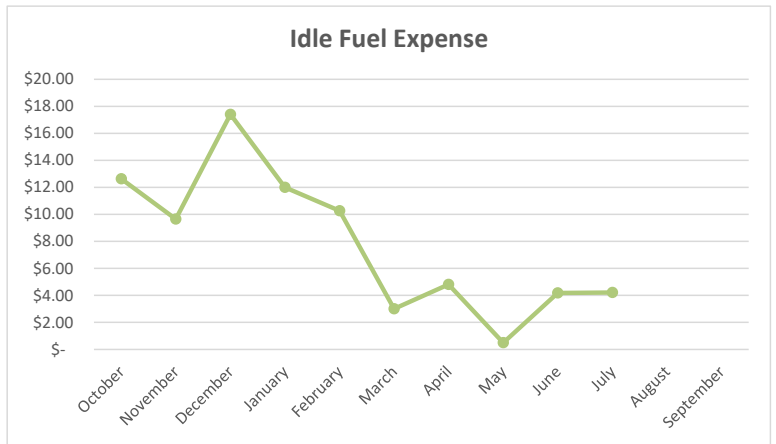
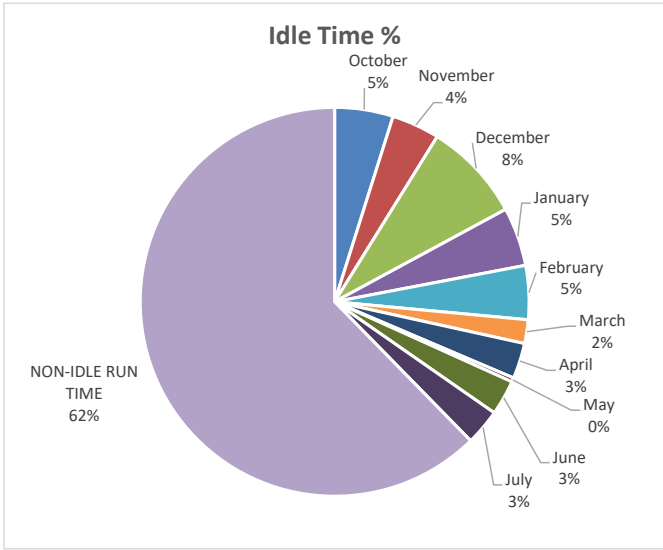
428.5

Machine Utilization:

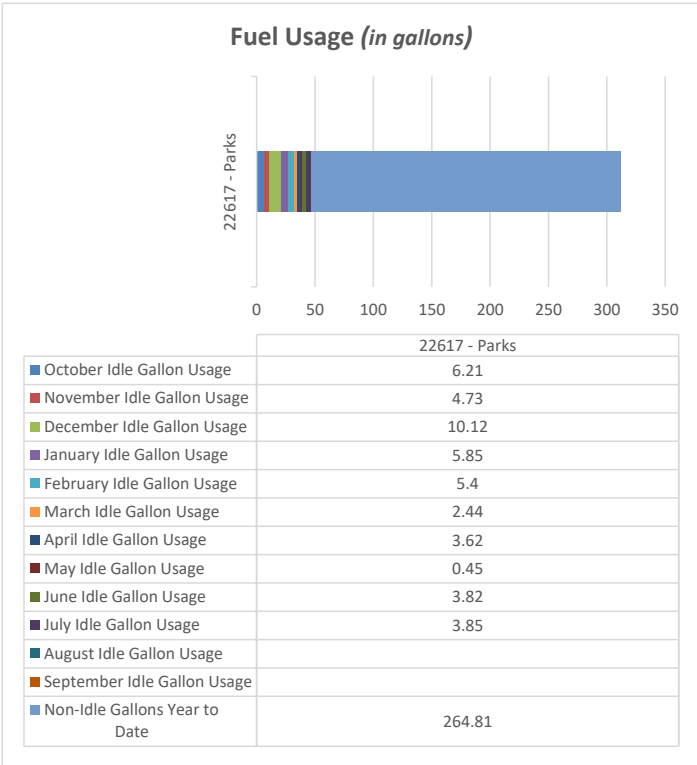
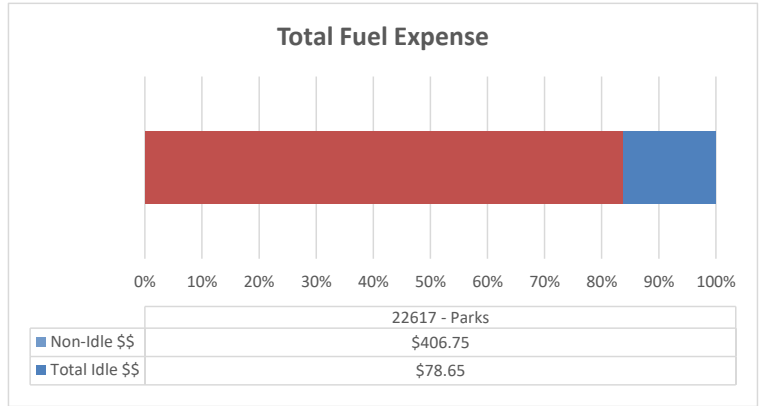
Above Average

Backhoe Report

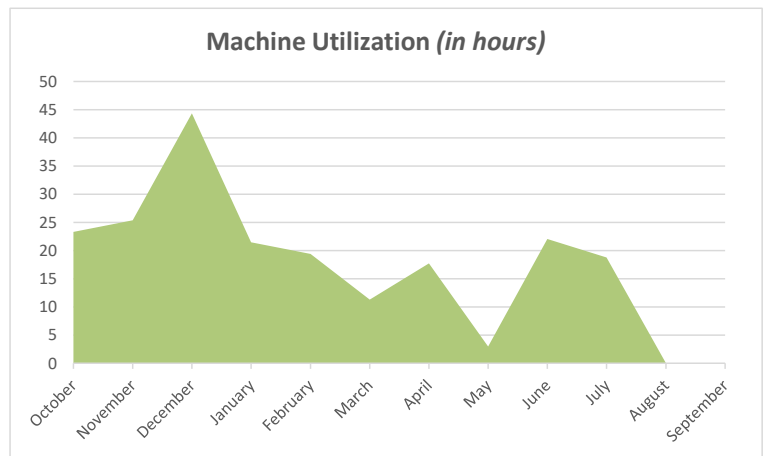
22617 - Parks



Total Annual Idle Percentage 37.7%



% of Fuel Expense Spent on Idle Time 16.20%



22617 TOTAL MACHINE HOURS 1483

FLEET AVERAGE TOTAL MACHINE HOURS 428.5

Machine Utilization: Above Average