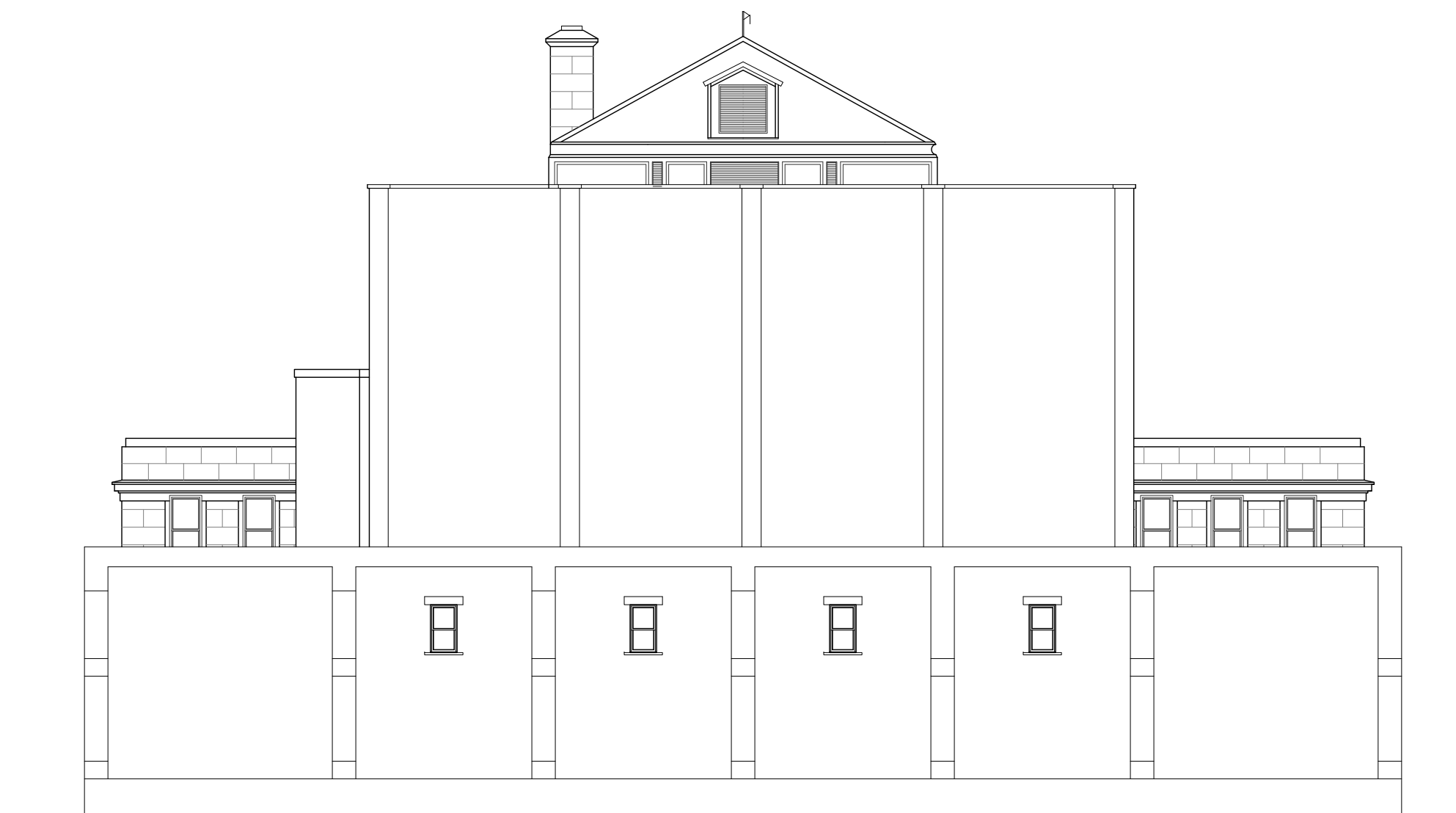
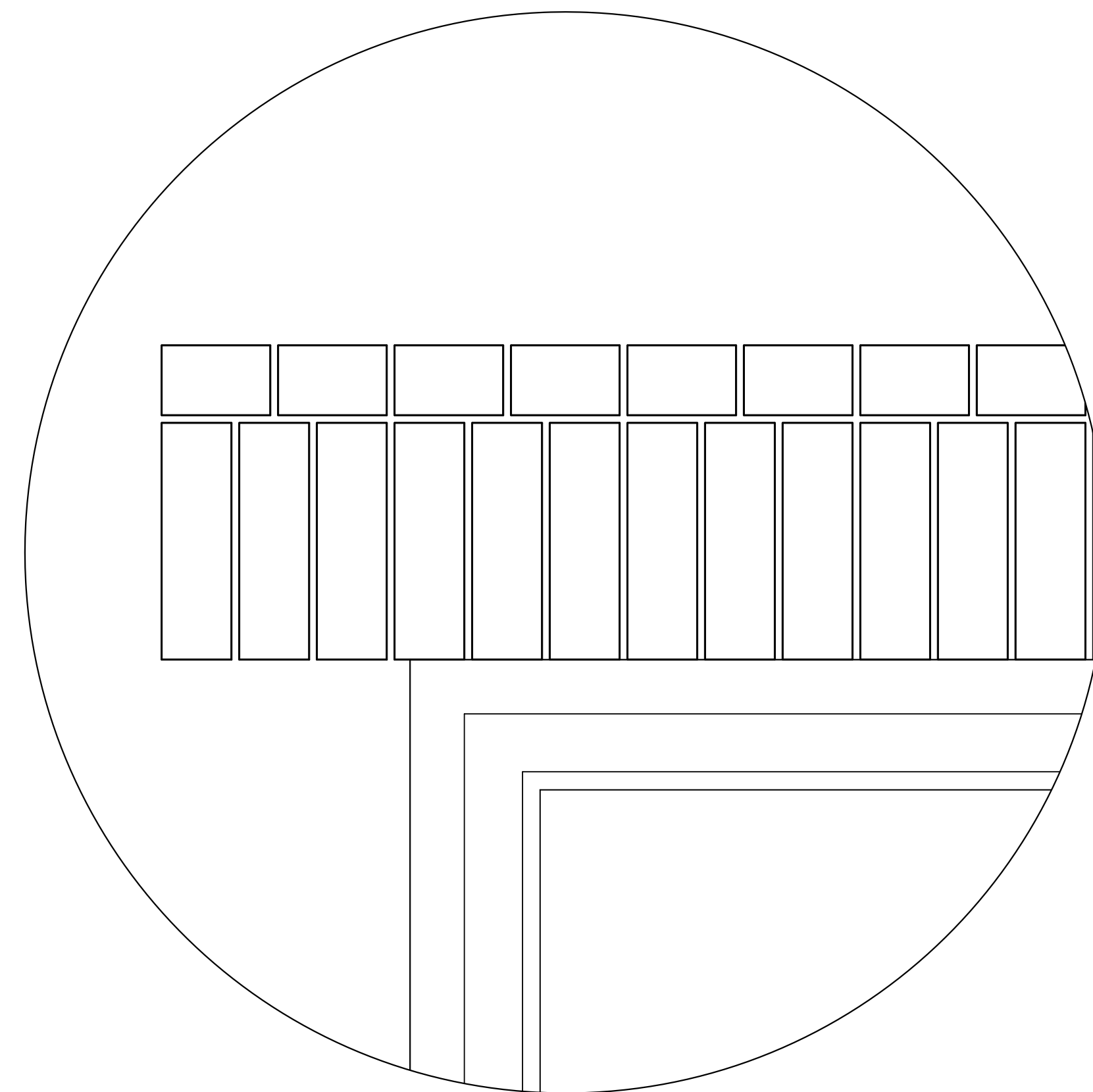




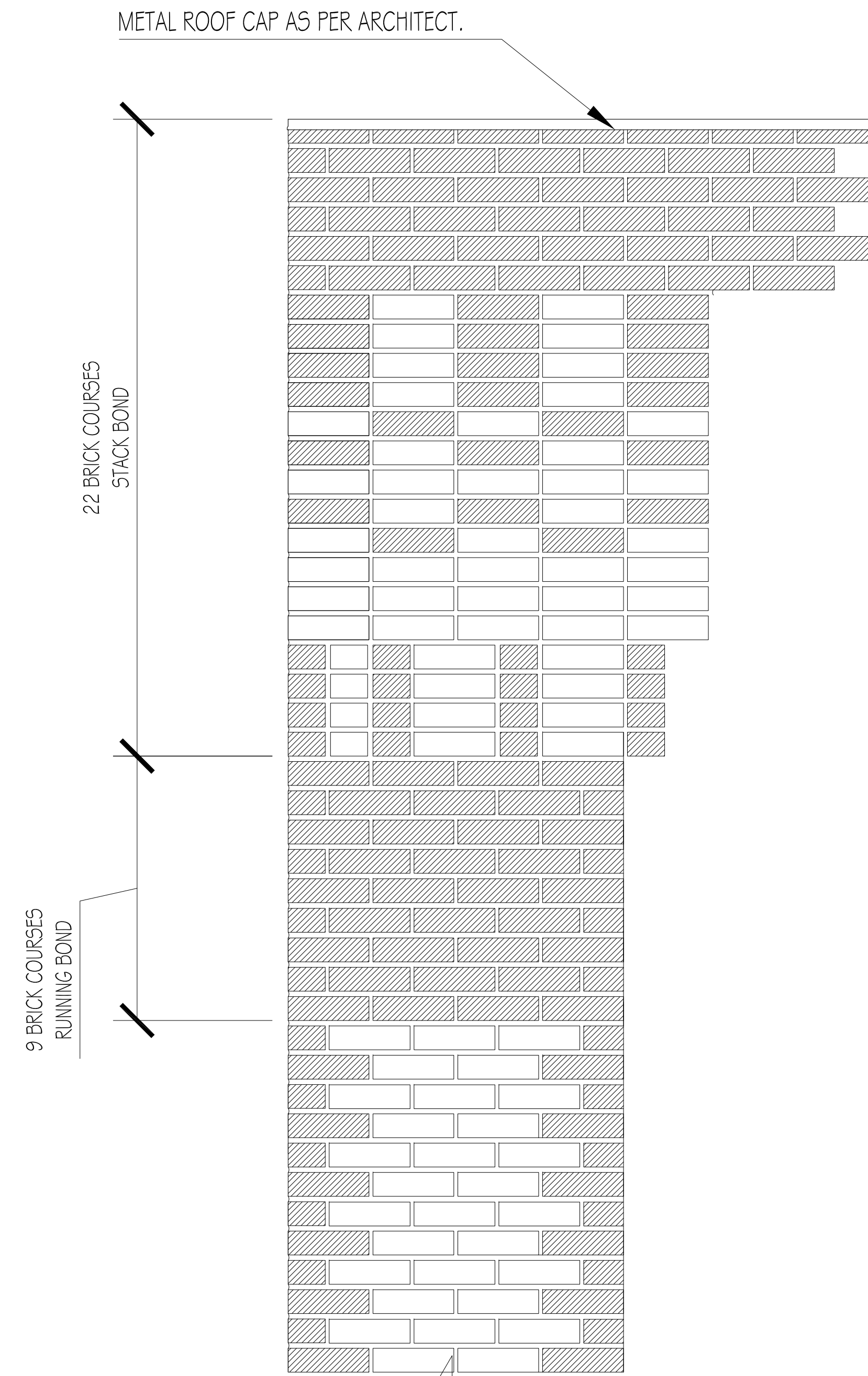
01 SOUTH ELEVATION
 SCALE: 1/16" = 1'-0"
 0 8' 16' 32'
 SCALE:



02 NORTH ELEVATION
 SCALE: 1/16" = 1'-0"
 0 8' 16' 32'
 SCALE:



03 LINTEL DETAIL AT ALL MASONRY OPENING
 SCALE: NTS



04 BRICK PATTERN
 SCALE: NTS
 BROWN SMOOTH BRICK AS PER ARCHITECT.
 MISSION STYLE CREAM BRICK TO APPROXIMATE HISTORIC BRICK SIZE.